

## How to use LBF

### Application:

LBF is so gentle on skin it can be used as often as required. Ensure skin is clean and dry before use.

1. Simply remove wipe from the sterilised sachet
2. Wipe over the area to be treated with an even coating
3. LBF dries in seconds. If an area of skin is missed, wait a few seconds until the first application dries and then reapply more LBF as before
4. If applying LBF to an area of skin where there are skin folds present, the skin contact areas will need to be separated to allow LBF to dry properly



### Precautions:

- Allow LBF to dry completely (it only takes a few seconds) before applying any device
- Use of LBF with other creams, oils or lotions may reduce the effectiveness of LBF



FOLD



*means no sting – even on sore skin*

LBF no sting wipes are impregnated with a soothing blend of siloxane copolymers that dry rapidly on the skin, leaving a transparent, breathable barrier that provides protection and an ideal application base for adhesive devices

#### LBF protects against:

Exposure to urine, faeces, exudates and other bodily fluids	Adhesive trauma	Friction and rubbing
---	-----------------	----------------------

#### LBF is suitable for use with:

Urinary sheathes	Continence pads	Stoma pouches
------------------	-----------------	---------------

#### LBF is gentle enough to be used on:

Supra pubic catheter sites and tracheostomy sites	Peri-wound skin	Children
---	-----------------	----------

What's more, LBF no sting wipes are less expensive than a well known competitor and are available on NHS prescription.

To order LBF ask your Continence Adviser, District Nurse, GP, call our **Free Careline 0800 036 0100** Northern Ireland **02890 833551** or visit our **website [www.clinimed.co.uk](http://www.clinimed.co.uk)**

Order Code	Contents	PIP code
3820	30 Wipes	289-6439

**Ingredients:** Hexamethyldisiloxane, Cyclomethicone, Trimethylsiloxysilicate.

LBF® and CliniMed® are registered trademarks of CliniMed (Holdings) Ltd. CliniMed Ltd., Cavell House, Knaves Beech Way, Loudwater, High Wycombe, Bucks HP10 9QY Tel: 01628 850100

Email: [enquiries@clinimed.co.uk](mailto:enquiries@clinimed.co.uk)  
[www.clinimed.co.uk](http://www.clinimed.co.uk)  
 918/0807



**CliniMed**

FOLD

*Stings Protection*



**CliniMed**

FOLD

FOLD



## Advanced silicone skin protection

Maintaining skin integrity is a complex process that is often taken for granted – until damage occurs.

To protect skin from bodily fluids, friction abrasions or adhesive trauma, many patients use a protective skin barrier. However, traditional skin barriers are formulated with alcohol, which dries the skin and can cause stinging.

Liquid Barrier Film (LBF) uses silicone technology to provide an alcohol-free, sting-free barrier that softens and soothes as it protects. Once applied, LBF dries in seconds, creating a breathable and transparent film on the skin.

LBF not only protects skin from urine, faeces, wound exudates, rubbing and adhesive trauma, but also provides ideal application base for the adhesion of sheaths, stoma pouches, wound dressings and other medical devices.



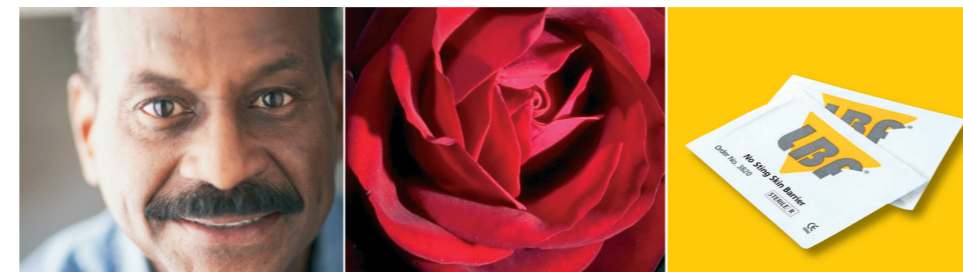
### LBF no-sting skin barrier wipes

- **Provide** a protective barrier against harmful enzymes in bodily fluids
- **Protect skin** around tracheostomy, stoma or supra pubic catheter sites
- **Prevent** further trauma to sore or damaged skin
- **Preserve** intact peri-wound skin



### Features and benefits of LBF

Formulated with silicone	Soften, soothe and protect skin without stinging
Alcohol-free	Does not sting when applied to sensitive or sore and excoriated skin
Non-paraben based	Will not clog or reduce the absorbency of incontinence pads, or affect device adhesion
Sterile and non-cytotoxic	Promote a healthy healing environment
Protects for 72 hours	Cost effective and convenient treatment



### Frequently asked questions

#### How often should LBF be re-applied?

LBF is so gentle on skin it can be reapplied as often as required. We recommend reapplying LBF after each device change.

#### How should LBF be removed?

There is no need to remove LBF as it will gradually wear off.

#### Can LBF be used on sore and excoriated skin?

Yes, LBF is a sterile and alcohol-free so will not interfere with wound healing or sting when used on sore and excoriated skin.

#### Can LBF be used on children?

Yes, LBF is completely inert, making it safe for use on children's sensitive skin.

#### How much surface area will one wipe cover?

Each LBF wipe can cover a surface area of 15cm x 15cm.

#### Is it possible to irradiate patients when the skin is treated with LBF?

Yes, no side effects have been reported

#### Is LBF nurse prescribable?

Yes, it is also available on NHS prescription.

#### Can LBF be used around tracheostomy sites?

Yes, it will help prevent skin breakdown.

