



# ELBUR

Product Catalogue

Your Bed specialist









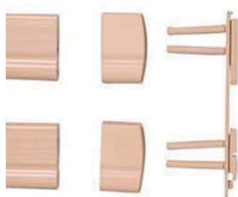
Variable mattress holder



Connection angle  
scissor and bed frame



Variable side rail fingers



Standard: side rail end caps



Standard quick realize bolts



Mattress support PB X4

There are many good reasons that speak for **ELBUR's** care beds. High class quality and many years of experience in the field of variable care bed development and construction. **ELBUR** care beds are not just high class quality products. Even the basic versions are equipped with many expedient and useful details.

It is our concern to provide care beds in line with all possible needs and demands. Our wide range of products offers our customers the highest convenience in design and functionality.

For this matter **ELBUR** home care beds generally come with telescopic side rails that can be lowered and slid directly onto each other so that they do not pose any hindrance for entering or exiting the bed. The standard side rail end caps minimize the gaps between side bars and side rails in a way that eliminates the hazard of accidental squeezing and therefore also complies with the latest standards.

All electronic components used comply with all valid safety standards regarding 220 Volts and 27 Volts.

In addition to its wide range of products **ELBUR** offers a multiplicity of custom-made products. Regarding scissor lifting beds there are hardly any limitations in length or width of the lying area. **ELBUR** can offer lying area dimensions from 70 cm to 140 cm in width and from 170 cm to 220 cm in length.

In addition, **ELBUR** offers a broad range of useful extra options such as central locking systems, side bar protection and padding as well as side bar elevations and other handy options.

**ELBUR** products are designed to offer the best possible use for the patient but also make the beds easy to handle for nursing staff. This is for instance depicted in the simple assembly of **ELBUR** beds.

Even though **ELBUR** beds are subject to ongoing enhancements and further development in accordance with the latest research, a backward compatibility will always be guaranteed. This also applies to the supply of replacement parts.

**ELBUR** manufactures its care beds in Europe using the latest technologies, which guarantee the variety of products in this convincing quality.

We would be very pleased if we could arouse your interest and will provide you with detailed overview of our product range of which you can gather all the technical information to choose the optimal care bed for your individual needs as well as any extras and additional furniture

Sincerely you're **ELBUR-TEAM**

## FRONT LIFTING CARE BEDS

- 6-7 **PB 321**: Easy to clean , without any wooden parts
- 8-9 **PB 325**: Economy Care bed
- 10-11 **PB 326**: stable care bed with open boards
- 12-13 **PB 331 & PB 337**: stable care bed with closed boards

## SCISSOR LIFTING CARE BEDS

- 14-15 **PB 521, PB 521XL**: BED in BED system
- 16-17 **PB 526**: Standard care bed with wooden boards
- 18-19 **PB 531**: Exclusive Home care bed with hidden casters
- 20-21 **PB 532**: Senior bed with loom surrounding
- 22-23 **PB 533**: Senior bed with wooden surrounding
- 24-25 **PB 636**: Low Bed
- 26-27 **PB X4 / PB XX4**: Maxi bed with 250 kg or 350 kg total load

**28-29 Technical summary**

**30-31 Rubens Family**

**35 Accessories**

## PB 321





PB321: In Trendelenburg position



PB321: metal mesh lying area

PB 321 can be ordered with HPL boards in white or beech. The metal side rails are easy to assemble and provide an optimal protection against an accidental falling out. The side bars can be lowered in a way that they pose no hindrance for entering or exiting the bed. This bed complies to the highest standards. Its 4-sectional lying surface is individually adjustable with 2 independent motors. Furthermore the adjustment of the foot part is assisted by 2 ratchet.

The metal mesh lying area comes with the standard dimensions of 90 cm x 200 cm. The lying area can also be ordered with wooden sprung slats instead of the metal mesh. The products will be delivered using transport-racks (at a maximum of 2 beds per palette). The beds have been partly preassembled and can be easily setup by a single person. The 4-sectional lying surface is electrically adjustable between 40 cm and 80 cm (upper end of the lying area). All electronic components have been manufactured according to latest research and are in accordance with all valid safety requirements and standards. Every single adjustment option of the bed is comfortably controllable by using the splash-proof manual control switch and any single function can be individually locked. The help pole has a load capacity of 80 kg. For additional stability it is also equipped with an inner core barrel.

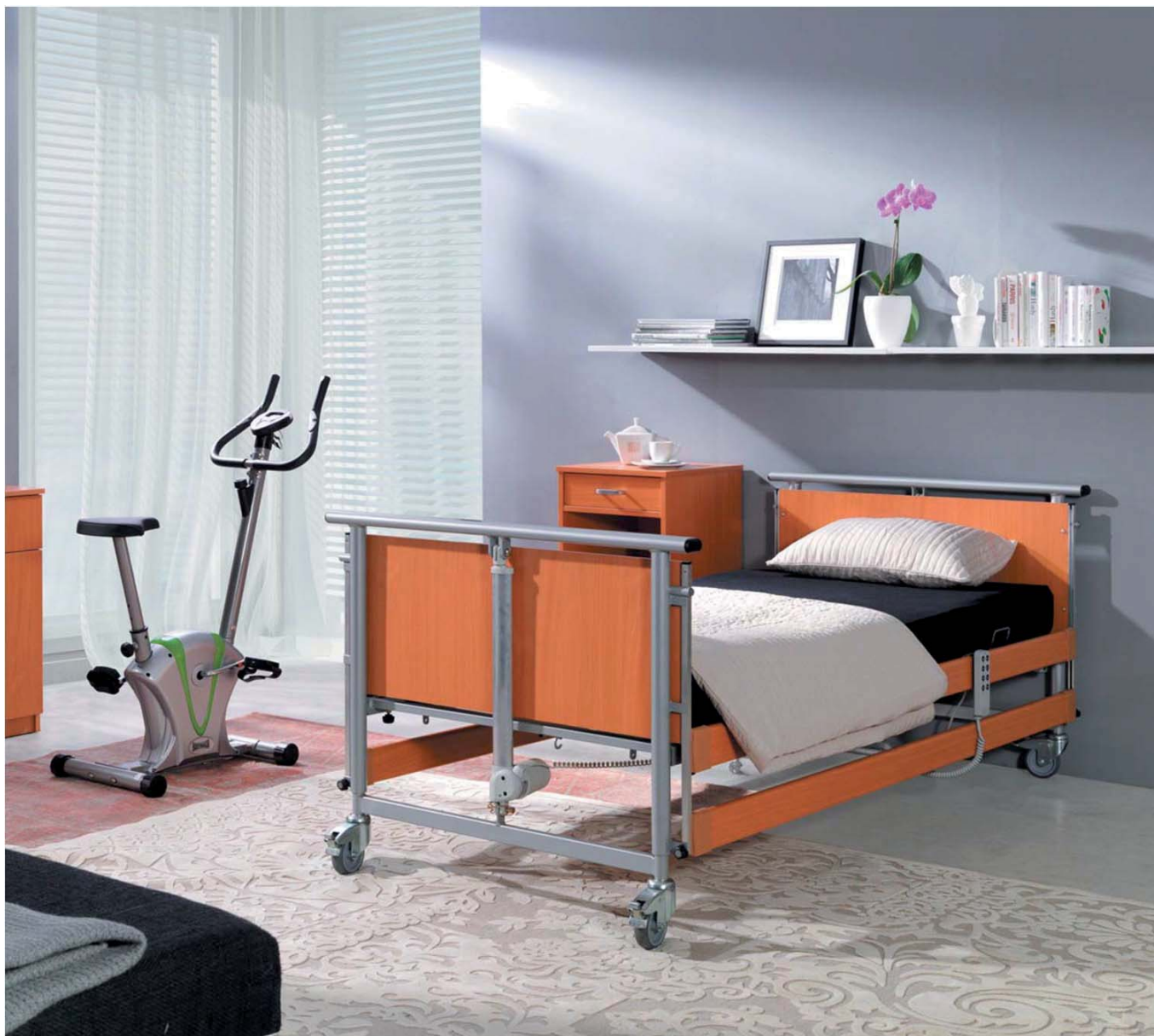
#### General Information:

**Save work load:** 175 kg  
**Max. User weight:** 135 kg  
**Total weight:** 92,6 kg  
**Heaviest single part:** 20,3 kg  
**Dimensions:** Length 216 cm, Width: 94 cm  
**Back part length:** 80 cm  
**Heading adjustability:** 70°  
**Foot adjustability:** 20°  
**Height under mattress support:** 22 cm  
**Caster size:** 100 mm always with brake.

PB. 321 fulfills all valid safety requirements and standards according to EU guidelines 93/42/EWG for devices, complies medical with the CE mark of conformity.



## PB 325





The PB 325 was especially designed for home care. Its simplicity and its well-balanced positive appearance make this model particularly captivating. It provides you with the entire comfort of a modern home care bed, such as an entry height of 40 cm and an electronically adjustable height of 80 cm, individually lockable casters, and continuous wooden side bars with plastic side bar end caps that prevent any risk of injury. Its modern 4-sectional lying surface with a width of 90 cm is individually adjustable with 2 independent motors on head and foot part. The length is 200 cm and can be extended by 20 cm if necessary. As on all ELBUR beds, the metal pieces on PB 325 are sealed using high quality polyester powder coating. Head and foot part fillings come in a homely beech pattern. Any possible electrical adjustment of the bed can be achieved using the easy to handle splash-proof manual control switch. Each single adjustment is individually lockable.

By using quick realize bolts and some preassembled components this care bed can be quickly and easily setup without any additional tools. The bed is delivered on a transport-rack on which it can later on also be stored.

#### **General Information:**

**Save work load: 175 kg**  
**Max. User weight: 135 kg**  
**Total weight: 83,7 kg**  
**Heaviest single part: 16,5 kg**  
**Dimensions: Length 216 cm, Width: 104 cm**  
**Back part length: 80 cm**  
**Heading adjustability: 70°**  
**Foot adjustability: 20°**  
**Height under mattress support: 22 cm**  
**Caster size: 100 mm always with brake.**

PB. 321 full fills all valid safety requirements and standards according to EU guidelines 93/42/EEG for devices, complies medical with the CE mark of conformity.

## PB 326



Stable front lifting care bed with well- proven technology.

With its beach colored wooden parts, the open fronts and the silver colored, powdered metal pieces, this care bed blends in naturally with any room ambience. The open fronts with the metal frame and hand rail are easy and quick to clean.

To avoid any sort of squeezing hazard there are side rail end caps at the ends of the side rails that minimize the space between side rails and wooden fronts in a way that prevent accidental squeezing.

This bed complies to the highest standards. Its 4-sectional lying surface is individually adjustable with 2 independent motors. Furthermore the adjustment of the foot part is assisted by 2 ratchets. For the standard version of the bed, the lying area with wooden sprung slats and durability adjuster comes with a surface area of 90 cm x 200 cm. It can also be ordered in 80 cm x 200 cm or at a length of 220 cm. For a t surcharge an easy to clean metal mesh lying area can be ordered.

Products will be delivered using transport-racks (at a maximum of 2 beds per palette) The beds have been partly preassembled and can be easily setup by a single person. The 4-sectional lying surface is electrically adjustable between 40 cm and 80 cm (upper end of the lying area). All electronic components have been manufactured according to latest research and are in accordance with all valid safety requirements and standards. Every single adjustment option of the bed is comfortably controllable by using the splash-proof manual control switch and any single function can be individually locked.

#### **General Information:**

<b>Save work load:</b>	<b>175 kg</b>
<b>Max. User weight:</b>	<b>135 kg</b>
<b>Total weight:</b>	<b>87,1 kg</b>
<b>Heaviest single part:</b>	<b>17,2 kg</b>
<b>Dimensions:</b>	<b>Length 216 cm, Width: 104 cm</b>
<b>Back part length:</b>	<b>80 cm</b>
<b>Heading adjustability:</b>	<b>70°</b>
<b>Foot adjustability:</b>	<b>20°</b>
<b>Height under mattress support:</b>	<b>22 cm</b>
<b>Caster size:</b>	<b>100 mm always with brake.</b>



PB 326: Packed with transport-rack

PB. 326 full fills all valid safety requirements and standards according to EU guidelines 93/42/EEG for devices, complies medical with the CE mark of conformity

## PB 331 / PB 337 Low front lifting care bed:







PB 331: Side view with open side bars



PB 337: Low front lifting care bed

Timeless front lifting bed with well-proven technology. With its beech wooden parts, the closed wooden fronts and the silver color powdered metal pieces this high class care bed blends in with its room surroundings. To avoid any sort of squeezing hazard there are side rail end caps at the ends of the side rails that minimize the space between side rails and wooden fronts in a way that prevent accidental squeezing. The side bars can be lowered and slid directly onto each other so that they do not pose any hindrance for entering or exiting the bed.

This bed complies to the highest standards. Its 4-sectional lying surface is individually adjustable with 2 independent motors. Furthermore the adjustment of the foot part is assisted by 2 ratchets. For the standard version of the bed, the lying area with wooden sprung slats and durability adjuster comes with a surface area of 90 cm x 200 cm. It can also be ordered at a width of 80 cm and in different lengths from 180 cm to a length of 220 cm. Against surcharge an easy to clean metal mesh lying area can be ordered.

The products will be delivered using transport-racks (at a maximum of 2 beds per palette). The beds have been partly preassembled and can be easily setup by a single person. The 4-sectional lying surface is electrically adjustable between 40 cm and 80 cm (upper end of the lying area). All electronic components have been manufactured according to latest research and are in accordance with all valid safety requirements and standards. Every single adjustment option of the bed is comfortably controllable by using the splash-proof manual control switch and any single function can be individually locked.

#### General Information:

Save work load:	175 kg
Max. User weight:	135 kg
Total weight:	87,1 kg
Heaviest single part:	17,2 kg
Dimensions:	Length 216 cm, Width: 104 cm
Back part length:	80 cm
Heading adjustability:	70°
Foot adjustability:	20°
Height under mattress support:	22 cm
Caster size:	100 mm always with brake.

PB. 331 / PB 337 full fills all valid safety requirements and standards according to EU guidelines 93/42/EWG for devices, complies medical with the CE mark of conformity.

## PB 521 / PB 521 XL



The flexible bed in bed system with the latest technology.

The bed in bed frame PB 521 can be combined with any of our bed frames. It stands firm and securely on its support frame and can be bolted safely. The PB 521 is available in many different dimensions according to your needs. It can also be integrated easily into already existing double beds.



Adjustable mattress retainer

The bed frame PB 521 complies with the highest standards and transforms your Bed room into a comfortable paradise. Its 4-sectional lying surface is individually adjustable with 2 independent motors. Furthermore the adjustment of the foot part is assisted by 2 ratchets.

For the standard version of the bed, the lying area with wooden sprung slats and durability adjuster comes with a surface area of 90 cm x 190 cm. The variably adjustable mattress retainers on the sides and on the foot part allow mattress dimensions between 90 cm and 100 cm with a single lying area. Against surcharge other lying area dimensions (up to a width of 140 cm and a length of 220 cm) or an easy to clean metal mesh lying area can be ordered. To ensure optimal stability the Bed in Bed system exceeding a width of 100 cm is only available as a metal mesh.

#### PB 521XL

In case a 175 kg maximum load is not enough, ask for our PB 521 XL that is Resilient up to a 250 kg maximum load. The lying area is only available as a metal mesh. The product comes boxed in cardboard packaging. Due to its elaborate and well-thought-out construction, this scissor lifting bed is easy to set up by a single person.

The 4-sectional lying surface is electrically adjustable between 31 cm and 71 cm (upper end of the lying area). All electronic components have been manufactured according to latest research and are in accordance with all valid safety requirements and standards. Every single adjustment option of the bed is comfortably controllable by using the splash-proof manual control switch and any single function can be individually locked. The help pole has a load capacity of 80 kg. For additional stability it is also equipped with an inner core barrel.

#### General Information:

<b>Save work load:</b>	<b>175 kg/250 kg</b>
<b>Max. User weight:</b>	<b>135 kg/210 kg</b>
<b>Total weight:</b>	<b>78kg/91kg kg</b>
<b>Heaviest single part:</b>	<b>29,5 kg</b>
<b>Dimensions:</b>	<b>Length 190 cm, Width: 90 cm</b>
<b>Back part length:</b>	<b>80 cm</b>
<b>Heading adjustability:</b>	<b>70°</b>
<b>Foot adjustability:</b>	<b>20°</b>
<b>Height under mattress support:</b>	<b>15 cm</b>

PB. 521/PB 521XL full fills all valid safety requirements and standards according to EU guidelines 93/42/EWG for devices, complies medical with the CE mark of conformity.

## PB 526



Elegant scissor lifting bed with the latest technology.

With its beech tree- colored wooden pieces and the silver powdered metal pieces, this bed blends in perfectly with any room ambience.



To avoid any sort of squeezing hazard, there are plastic end caps installed at the ends of the robust side bars that minimize the gaps between side bars and the wooden front in a way that makes an accidental squeezing impossible. The telescopic side bars can be lowered and slid directly onto each other so that they do not pose any hindrance for entering or exiting the bed.

This bed complies with the highest standards. Its 4-sectional lying surface is individually adjustable with 2 independent motors. Furthermore the adjustment of the foot part is assisted by 2 ratchets. For the standard version of the bed, the lying area with wooden sprung slats and durability adjuster comes with a surface area of 90 cm x 200 cm. Against surcharge a metal mesh lying area can be ordered or different lying area dimensions that can vary in length up to 220 cm and in width up to 140 cm. Exceeding a 100 cm width we generally have to advise you to a metal mesh, for wooden sprung slats are according to our experience not stable enough. Also the PB526 comes with a range of freely selectable additional options for an additional charge such as [DBFK], side bars or a central break system.

The product is delivered packaged in cardboard boxes on a pallet. Due to its cleverly devised and well-thought-out construction this scissor bed can be easily setup by only one person.

The 4-sectional lying surface is electrically adjustable between 40 cm and 80 cm (upper end of the lying area) All electronic components have been manufactured according to latest research and are in accordance with all valid safety requirements and standards.

Every single adjustment option of the bed is comfortably controllable by using the splash-proof manual control switch and any single function can be individually locked. The help pole has a load capacity of 80 kg. For additional stability it is also equipped with an inner core barrel.



PB 526: With side bars and standard front of PB 531



PB 526: Telescopic side bar bracket

#### General Information:

<b>Save work load:</b>	<b>175 kg</b>
<b>Max. User weight:</b>	<b>135 kg</b>
<b>Total weight:</b>	<b>102 kg</b>
<b>Heaviest single part:</b>	<b>27 kg</b>
<b>Dimensions:</b>	<b>Length 207 cm, Width: 102 cm</b>
<b>Back part length:</b>	<b>80 cm</b>
<b>Heading adjustability:</b>	<b>70°</b>
<b>Foot adjustability:</b>	<b>20°</b>
<b>Height under mattress support:</b>	<b>16 cm</b>
<b>Caster size:</b>	<b>100 mm always with brake.</b>

PB. 526 full fills all valid safety requirements and standards according to EU guidelines 93/42/EEG for devices, complies medical with the CE mark of conformity.

## PB 531



Elegant comfortable scissor lifting bed.

With its beech colored wooden parts, the classy wooden fronts, its high-class wooden lining and the silver powdered metal pieces the PB 531 convinces through its homely visual appearance. It complies with all possible requirements for a bed used in home, ambulant or stationary care.

To avoid any sort of squeezing hazard, there are plastic end caps installed at the ends of the robust side bars that minimize the gaps between side bars and the wooden front in a way that makes an accidental squeezing impossible.



PB 531: Front with continuous side rails

This bed complies with the highest standards. Its 4-sectional lying surface is individually adjustable with 2 independent motors. Furthermore the adjustment of the foot part is assisted by 2 ratchets]. Against surcharge this bed is also available in different colors. For the standard version of the bed, the lying area with wooden sprung slats and durability adjuster comes with a surface area of 90 cm x 200 cm. Against surcharge a width of 100 cm is available. Exceeding a width of 100 cm, we offer a metal mesh lying area only to ensure a stable construction. The PB 531 is extremely robust and stable on its cylindrical legs in which the castors are hidden, that can be lowered on demand. Due to its well-thought out and elaborate construction, the PB 531 can be easily setup by a single person.

The 4-sectional lying surface is electrically adjustable between 40 cm and 80 cm (upper end of the lying area) All electronic components have been manufactured according to latest research and are in accordance with all valid safety requirements and standards.

Every single adjustment option of the bed is comfortably controllable by using the splash-proof manual control switch and any single function can be individually locked. The help pole has a load capacity of 80 kg. For additional stability it is also equipped with an inner core barrel.

Congenial to the standard color beech we recommend the comfortable bedside table Rubens 2 (in the same color ) that has a vertically high adjustable tablet top or its little brother Rubens 1 (not vertically adjustable and not high adjustable)

#### General Information:

<b>Save work load:</b>	<b>175 kg</b>
<b>Max. User weight:</b>	<b>135 kg</b>
<b>Total weight:</b>	<b>125,5 kg</b>
<b>Heaviest single part:</b>	<b>47,3 kg</b>
<b>Dimensions:</b>	<b>Length 207 cm, Width: 106 cm</b>
<b>Back part length:</b>	<b>80 cm</b>
<b>Heading adjustability:</b>	<b>70°</b>
<b>Foot adjustability:</b>	<b>20°</b>
<b>Height under mattress support:</b>	<b>18 cm</b>
<b>Caster size:</b>	<b>58 mm always with brake.</b>



Wooden cover and cylindrical legs.

PB 531 full fills all valid safety requirements and standards according to EU guidelines 93/42/EEG for devices, complies medical with the CE mark of conformity



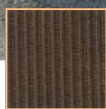
## PB 532



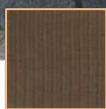
Senior bed with loom surrounding

Senior bed PB 532 consists of our approved BED IN BED system PB 521 and a high-class homelike bed frame, that stands on bed posts of solid wood. BED in BED insert and frame are firmly attached and available in 6 different colors. Our loom surrounding senior bed is also available in the following dimensions:

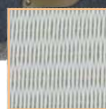
Length: 200/210 cm, Width: 80/90/100/120/140/160/180/200 cm



braun



mocca



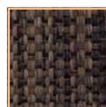
creme



natur



bordeaux



gabana braun





PB 532: standing on solid wood posts



PB 532: With lifted scissor lifting insert



Senior bed as a double bed

#### Senior bed with loom surrounding

Our loom bed PB 532 stands for individual custom-made system solutions, as well as distinctive home and bedroom designs for discerning customers. This particular senior bed complies with the highest standards and transforms your bedroom into a place of peace and relaxation.

Its 4-sectional lying surface is individually adjustable with 2 independent motors. Furthermore the adjustment of the foot part is assisted by 2 ratchets. For the standard version of the bed, the lying area with wooden sprung slats comes with a surface area of 90 cm x 190 cm. Due to its adjustable mattress retainers the dimensions can be easily extended to 100 cm x 200 cm. This bed blends in easily with any room ambience since it is available in 6 different colors and individual sizes. The PB532 can be ordered as a mix- bed (with or without a scissor lifting option). Freely turn to our ELBUR TEAM for advice.

The product is delivered packaged in cardboard boxes on a pallet. Due to its cleverly devised and well-thought-out construction this scissor bed can be easily setup by only one person.

The 4-sectional lying surface is electrically adjustable between 31 cm and 71 cm (upper end of the lying area) All electronic components have been manufactured according to latest research and are in accordance with all valid safety requirements and standards.

Every single adjustment option of the bed is comfortably controllable by using the splash-proof manual control switch and any single function can be individually locked. The help pole can be included and has a load capacity of 80 kg. For additional stability it is also equipped with an inner core barrel.

#### General Information:

<b>Save work load:</b>	<b>175 kg</b>
<b>Max. User weight:</b>	<b>135 kg</b>
<b>Total weight:</b>	<b>121,5 kg</b>
<b>Heaviest single part:</b>	<b>29,5 kg</b>
<b>Dimensions:</b>	<b>Length 207 cm, Width: 119 cm</b>
<b>Back part length:</b>	<b>80 cm</b>
<b>Heading adjustability:</b>	<b>70°</b>
<b>Foot adjustability:</b>	<b>20°</b>
<b>Height under mattress support:</b>	<b>10 cm</b>

PB 532 full fills all valid safety requirements and standards according to EU guidelines 93/42/EWG for devices, complies medical with the CE mark of conformity



Our senior bed 533 has a timeless design. The high-class wooden frame that is available in different colors is complemented through an electrically adjustable BED IN BED system insert frame. The vertical adjustability of the lying surface between 35 cm and 75 cm permits pleasant entering and exiting.

Standard dimensions of the lying area are 90 cm x 200 cm, although other dimensions can be ordered on demand against surcharge. The lying area is 4 sectioned and both head and foot part can be electrically adjusted using 2 electric motors. Additionally telescopic slip-on side bars can be attached.

**General Information:**

<b>Save work load:</b>	<b>175 kg</b>
<b>Max. User weight:</b>	<b>135 kg</b>
<b>Total weight:</b>	<b>111 kg</b>
<b>Heaviest single part:</b>	<b>31,3 kg</b>
<b>Dimensions:</b>	<b>Length 207 cm, Width: 106 cm</b>
<b>Back part length:</b>	<b>80 cm</b>
<b>Heading adjustability:</b>	<b>70°</b>
<b>Foot adjustability:</b>	<b>20°</b>
<b>Height under mattress support:</b>	<b>22 cm</b>

PB 533 full fills all valid safety requirements and standards according to EU guidelines 93/42/EEG for devices, complies medical with the CE mark of conformity



## PB 636



A secure solution, when the side rails stay down. With its beech colored wooden parts, the classy wooden fronts and the silver color powdered metal pieces, the PB 636 offers a very peasant appearance that blends in perfectly with any surrounding. Furthermore the PB 636 can be lowered to a ground level of 26 cm still providing enough space underneath to use a patient lift.



To avoid any sort of squeezing hazard, there are plastic end caps installed at the ends of the robust side bars that minimize the gaps between side bars and the wooden front in a way that makes an accidental squeezing impossible. The telescopic side bars can be lowered and slid directly onto each other so that they do not pose any hindrance for entering or exiting the bed. Even in the lowest position of the bed the lowered sidebars pose no annoyance.

This bed complies with the highest standards. Its 4-sectional lying surface is individually adjustable with 2 independent motors. Furthermore the adjustment of the foot part is assisted by 2 ratchets. The lying surface frame is optically concealed by wooden side reels.

The lying area with wooden sprung slats comes with a surface area of 90 cm x 200 cm. Against surcharge a metal mesh for the lying area is also available.

The product is delivered packaged in cardboard boxes on a pallet. Due to its cleverly devised and well-thought-out construction the PB 636 bed can be easily setup. Do not forget to order a protection mat.

The 4-sectional lying surface is electrically adjustable between 26 cm and 67 cm (upper end of the lying area) All electronic components have been manufactured according to latest research and are in accordance with all valid safety requirements and standards.

Every single adjustment option of the bed is comfortably controllable by using the splash-proof manual control switch and any single function can be individually locked. The help pole can be included and has a load capacity of 80 kg. For additional stability it is also equipped with an inner core barrel.

#### **General Information:**

<b>Save work load:</b>	<b>175 kg</b>
<b>Max. User weight:</b>	<b>135 kg</b>
<b>Total weight:</b>	<b>107,6kg</b>
<b>Heaviest single part:</b>	<b>30,2 kg</b>
<b>Dimensions:</b>	<b>Length 207 cm, Width:106 cm</b>
<b>Back part length:</b>	<b>80 cm</b>
<b>Heading adjustability:</b>	<b>70°</b>
<b>Foot adjustability:</b>	<b>20°</b>
<b>Height under mattress support:</b>	<b>15 cm</b>
<b>Caster size:</b>	<b>50 mm always with brake.</b>

PB 636 full fills all valid safety requirements and standards according to EU guidelines 93/42/EEG for devices, complies medical with the CE mark of conformity

## PB X4 / PB XX4



This high quality care bed has been especially designed for patients with a higher bodyweight and can also be used when a heavier mattress is necessary. This care bed is similar to our PB 526 and can be ordered in 2 different variations:

- Maximum load of 250 kg PB X4
- Maximum load of 350 kg PB XX4

Using its unlocked 4 to 6 high-class ball bearing casters the bed can easily be shifted. The continuous side bars can be lowered and slid onto each other that they pose no hindrance for entering or exiting the bed. This bed has been produced to withstand highest stresses and strains. The 4-sectioned lying area comes in the standard dimensions of 100 cm x 200 cm, is made of an easy to clean metal mesh and individually adjustable using 2 single electric motors. In addition, the adjustability of the foot part is supported by 2 ratchets. On demand this bed can be equipped with a central break and is also available in other lying area dimensions. The PB X4 / PB XX4 is laterally accessible for patient lifts. The 4-sectional lying surface is electrically adjustable between 40 cm and 80 cm (upper end of the lying area). All electronic components have been manufactured according to latest research and are in accordance with all valid safety requirements and standards. Every single adjustment option of the bed is comfortably controllable by using the splash-proof manual control switch and any single function can be individually locked. The very stable lifting mechanism has been designed to handle loads up to 250 kg / 350 kg naturally

**General Information:**

<b>Save work load:</b>	<b>250 kg/350</b>
<b>Max. User weight:</b>	<b>200 kg/300kg</b>
<b>Total weight:</b>	<b>121 kg/149 kg</b>
<b>Heaviest single part:</b>	<b>39 kg / 53 kg</b>
<b>Back part length:</b>	<b>80 cm</b>
<b>Heading adjustability:</b>	<b>70°</b>
<b>Foot adjustability:</b>	<b>20°</b>
<b>Height under mattress support:</b>	<b>22 cm</b>
<b>Caster size:</b>	<b>100 mm always with brake.</b>

PB X4/ PB XX4 full fills all valid safety requirements and standards according to EU guidelines 93/42/EEG for devices, complies medical with the CE mark of conformity

## Technical summary

Product	PB 321 Front lifting bed	PB 325 Front lifting bed	PB 326 Front lifting bed	PB 331/PB 337 Front lifting bed	PB 338 Front lifting bed	PB 521 Scissor lift bed	PB 526 Scissor lift bed
Maximum Load	175 kg	175 kg	175 kg	175 kg	175 kg	200 kg	175 kg
User weight	135 kg	135 kg	135 kg	135 kg	135 kg	165 kg	135 kg
Help pole	80 kg	80 kg	80 kg	80 kg	80 kg	80 kg	80 kg
Out side dimensions [cm]:							
Height/width/Length	85×94×216	85×104×216	85×104×216	88×102×215	88×102×217	41×90×190	79×102×207
[cm]:							
Mattress support	90×200	90×200	90×200	90×200	90×200	90×190	90×200
[cm]:							
Height adjustability	40 bis 80	40 bis 80	40 bis 80	40 bis 80/23 bis 66	26 bis 66	31 bis 71	40 bis 80
Total weight	92,6 kg	83,7 kg	87,1 kg	102,5 kg	107,3 kg	78,0 kg	102,0 kg
Single parts weight:							
Weight head part	20,3 kg	16,5 kg	17,0 kg	17,0 kg	17,0 kg	19,8 kg	18,0 kg
Foot part	18,0 kg	16,3 kg	16,6 kg	16,6 kg	16,6 kg	16,8 kg	17,5 kg
Total mattress support	38,3 kg	32,8 kg	33,6 kg	33,6 kg	33,6 kg	36,6 kg	35,5 kg
Scissor lift	–	–	–	–	–	29,5 kg	27,0 kg
1 Frontenteil	16,5 kg	15,7 kg	17,2 kg	23 kg / 24,9	27,3 kg	–	9,2 kg
Help Pole	5,3 kg	5,3 kg	5,3 kg	5,3 kg	5,3 kg	5,3 kg	5,3 kg
1 side rail	5,7 kg	2,4 kg	2,3 kg	2,3 kg	2,3 kg	–	2,3 kg
Motor system:							
Controller:	1,3 kg	1,3 kg	1,3 kg	1,3 kg	1,3 kg	1,3 kg	1,3 kg
Motor mattress support	1,5 kg	1,5 kg	1,5 kg	1,5 kg	1,5 kg	1,5 kg	1,5 kg
Scissor motor	–	–	–	–	–	2,0 kg	2,0 kg
Handset	0,3 kg	0,3 kg	0,3 kg	0,3 kg	0,3 kg	0,3 kg	0,3 kg
Standard mattress size in cm	90×200×10	90×200×10	90×200×10	90×200×10	90×200×10	90/100×200×	90×200×10
Up to	90×200×12	90×200×12	90×200×12	90×200×12	90×200×12	90/100×200×	90×200×10
Foam weight	25–50 kg/m <sup>3</sup>	25–50 kg/m <sup>3</sup>	25–50 kg/m <sup>3</sup>	25–50 kg/m <sup>3</sup>	25–50 kg/m <sup>3</sup>	25–50 kg/m <sup>3</sup>	25–50 kg/m <sup>3</sup>
Room recommendation							
Room temperature from to	+10°C bis	+10°C bis	+10°C bis	+10°C bis	+10°C bis	+10°C bis	+10°C bis
Humidity	30 % bis 75	30 % bis 75	30 % bis 75	30 % bis 75	30 % bis 75	30 % bis 75	30 % bis 75
Adjustability of mattress support							
Back support	0° bis 70°	0° bis 70°	0° bis 70°	0° bis 70°	0° bis 70°	0° bis 70°	0° bis 70°
Foot support	0° bis 20°	0° bis 20°	0° bis 20°	0° bis 20°	0° bis 20°	0° bis 20°	0° bis 20°
Storage temperature	+3°C bis	+3°C bis	+3°C bis	+3°C bis	+3°C bis	+3°C bis	+3°C bis
Storage humidity	30 % bis 75%	30 % bis 75%	30 % bis 75	30 % bis 75	30 % bis 75	30 % bis 75	30 % bis 75



Product	PB 531 Scissor Lifting bed	PB 532 Senior bed Loom	PB 533 Senior bed wood	PB 636 Low Bed	PB X 4	PB XX 4
Loads:						
Maximum Load	175 kg	200kg	175 kg	175 kg	250 kg	350 kg
User weight	135 kg	165 kg	135 kg	135 kg	200 kg	–
Help pole	80 kg	80 kg	80 kg	80 kg	80 kg	80 kg
Out side dimensions [cm]:						
Height/width/length	81×106×207	86×119×207	87×111×206	75×106×207	79×102×207	80×132×207
Size mattress support at std.:						
Width/length	90×200 cm	90×190 cm	90×200 cm	90×200 cm	90×200 cm	120×200 cm
High adjustability [cm]:						
From/max	40 bis 78	31 bis 71	41 bis 83	26 bis 67	40 bis 80	40 bis 80
Total weight	125,5 kg	121,5 kg	111,0 kg	107,6 kg	121,4 kg	149,2 kg
Single weight						
Back part of mattress support	18,0 kg	19,8 kg	21,0 kg	17,5 kg	20,0 kg	26,2 kg
Foot part of mattress support	17,5 kg	16,8 kg	19,6 kg	17,2 kg	19,7 kg	27,3 kg
Total weight mattress support	35,5 kg	36,6 kg	40,6 kg	34,7 kg	39,7 kg	53,5 kg
Scissor lift	47,3 kg	29,5 kg	31,3 kg	30,2 kg	39,0 kg	52,1 kg
1 Wooden board	10,8 kg	–	9,4 kg/5,2 kg	10,8 kg	9,2 kg	12,0 kg
Help Pole	5,3 kg	5,3 kg	5,3 kg	5,3 kg	5,3 kg	5,3 kg
1 side rail	2,3 kg	–	7,3 kg	2,3 kg	2,3 kg	2,3 kg
Motor system						
Controller:	1,3 kg	1,3 kg	1,3 kg	1,3 kg	1,8 kg	1,8 kg
1 mattress support motor	1,5 kg	1,5 kg	1,5 kg	1,5 kg	1,5 kg	1,5 kg
Scissor motor	2,0 kg	2,0 kg	2,0 kg	2,0 kg	4,7 kg	4,7 kg
Handset	0,3 kg	0,3 kg	0,3 kg	0,3 kg	0,3 kg	0,3 kg
Standard mattress sizes [cm]:	90×200×10	90×200×10	90/100×200×10	90×200×10	90/100×200×10	
or	90×200×12	90×200×12	90/100×200×12	90×200×12	90/100×200×12	
Foam weight	25–50 kg/m <sup>3</sup>	25–50 kg/m <sup>3</sup>	25–50 kg/m <sup>3</sup>	25–50 kg/m <sup>3</sup>	25–50 kg/m <sup>3</sup>	
Power supply	230 VAC 50 Hz.	230 VAC 50 Hz.	230 VAC 50 Hz.	230 VAC 50 Hz.	230 VAC 50 Hz.	230 VAC 50 Hz.
Fluid protection	IP X4	IP X4	IP X4	IP X4	IP X4	IP X4
Room temperature von/ bis °C:	+10°C bis	+10°C bis	+10°C bis	+10°C bis	+10°C bis	+10°C bis +40°C
Humidity	30 % bis 75 %	30 % bis 75 %	30 % bis 75 %	30 % bis 75 %	30 % bis 75 %	30 % bis 75 %
Angle adjustability						
Back part	0° bis 70°	0° bis 70°	0° bis 70°	0° bis 70°	0° bis 70°	0° bis 70°
Foot part	0° bis 20°	0° bis 20°	0° bis 20°	0° bis 20°	0° bis 20°	0° bis 20°
Storage temperature	+3°C bis +45°C	+3°C bis +45°C	+3°C bis +45°C	+3°C bis +45°C	+3°C bis +45°C	+3°C bis +45°C
Storage humidity	30% bis 75%	30 % bis 75 %	30 % bis 75 %	30 % bis 75 %	30 % bis 75 %	30 % bis 75 %

## Bed side tables



Rubens 1  
With swing out tray



Rubens 1 without swing – type tray



Rubens 2

### Rubens family

The bedside table Rubens (h/w/d height, width, depth 850 mm/ 500 mm/ 450 mm) is generally delivered in beech effect and therefore blends in harmoniously with our care bed designs. In addition to a top drawer, that is extensible to both sides and an oddments compartment, this bedside table comes with another compartment: It can be closed using a cabinet door and is divided by an additional tray.

#### Rubens 1

The bed side table Rubens 1 features a swing-type work disc or tray (tray size w/d 720 mm / 360 mm). While being unused the tray can be folded into the side of the bedside table and therefore does not pose a hindrance during transport

#### Rubens 1 OT

The Rubens 1 is also available without the swing-type tray.

#### Rubens 2

The tray / work disc of Rubens 2 (h/w/d 850 mm / 500 mm / 450 mm) can be vertically adjusted (tray size w/d 580 mm / 330 mm). This tray is also tilt able and the angle is individually adjustable. Its variable height adjustment (730 mm to 1000 mm) is supported using a gas pressure spring for safe and easy handling. While being unused the tray can be folded into the side of the bedside table as in Rubens 1. The table is therefore easy to shift and needs little space. Against surcharge the Rubens 1 and 2 are also available with built-in fridges or with other color effects.

## Rubens Over bed table

The bedside tables Rubens 3 and Rubens 9 are generally delivered in beech effect and therefore blend in harmoniously with our care bed designs

### Rubens 3



Rubens 3  
Tray size 900mm x 450mm

The height adjustment from 770 mm to 1010 mm can be conducted easily using only one hand. This is ensured by a gas pressure spring placed next to the main pillar of the table. The split tray enables for example the deposit of a cup of tea on the non-adjustable part of the table while reading a book in well-adjusted comfortable position. The angle adjustability of the book-rest is eligible in 5 steps, variable by using a ratchet placed on the backside of the adjustable tray. Bedside table Rubens 3 comes with 2 castors with brakes and 2 regular castors.

The melamin framed trays are easy to clean due to their robust surface. The entire work surface has dimensions of (w/d) 900 mm x 450 mm. The adjustable part has dimensions of (w/d) 620 mm x 450 mm.

### Rubens 9:



Rubens 9

The angle adjustable tray of bedside table Rubens 9 can be altered in 7 steps which allows the use from both sides. The tilt angle can be varied between 0° and 45°.

The adjustable tray with a width of 790 mm x 400 mm depth is variable in 6 stages at height of 770 mm to 1113 mm. The even and robust surface is easy to clean. The melamin frame prevents the permeation of liquids into the work surface. Just as the Rubens 3 Rubens 9 is also equipped with 2 castors with brakes and 2 regular castors without brakes.

## Other accessories



Bed Tablet



Huntling bed full inside cover



Triangel with automatic belt



**Elbur Vertriebs GmbH**

Askanierweg 12  
32429 Minden  
Tel.: +49 571 951 9794  
Fax: +49 571 951 9795  
[www.elbur-vertrieb.de](http://www.elbur-vertrieb.de)  
[info@elbur-vertrieb.de](mailto:info@elbur-vertrieb.de)

