

Mepilex® Transfer

EXUDATE TRANSFER DRESSING WITH SAFETAC® TECHNOLOGY

- Atraumatic to the wound and surrounding skin on removal
- Transfers exudate away from the wound and minimises the risk of maceration
- Enables management of difficult-to-dress wounds

Thin foam layer

- Transfers the exudate away from the wound
- Suitable for large, exuding and difficult to dress wounds



Layer with Safetac Technology

- Atraumatic to the wound and the surrounding skin on removal
- Minimises the risk of maceration

HOW MEPILEX TRANSFER WORKS

Mepilex Transfer is thin and conformable which, in combination with the soft silicone Safetac layer, ensures direct contact to the wound and the surrounding skin and uneven surfaces. As the Safetac layer seals around the wound, the foam structure of Mepilex Transfer allows the exudate to move vertically into a secondary absorbent pad. Mepilex Transfer maintains a moist wound environment in combination with an appropriate secondary dressing.

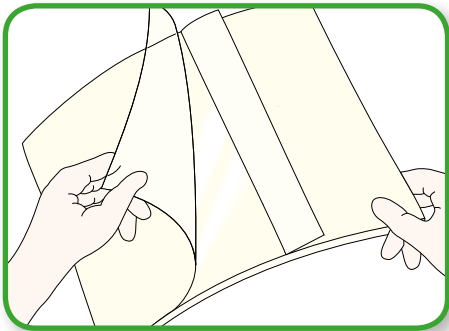
AREA OF USES

Mepilex Transfer is designed for a wide range of exuding and difficult-to-dress wounds such as

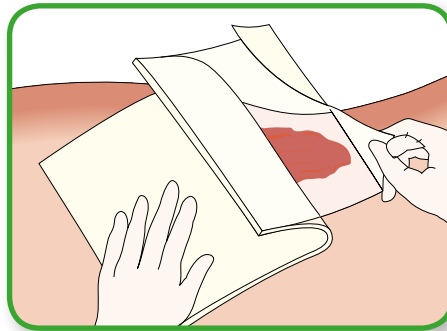
- Fungating tumours¹
- Epidermolysis Bullosa (EB)
- Donor sites
- Venous leg ulcers

Mepilex Transfer can also be used as a protective layer on non-exuding wounds and/or large areas with fragile skin. Mepilex Transfer can be used under compression. Apply an appropriate secondary dressing to maintain a moist wound environment.

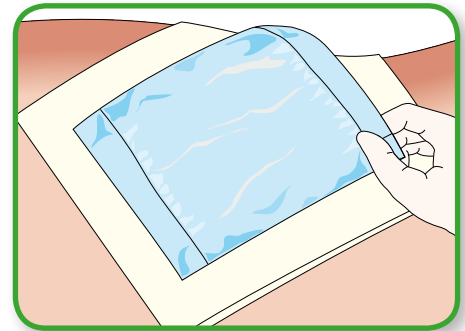
HOW TO USE MEPILEX TRANSFER



1. Cleanse the wound area and dry the surrounding skin. Remove the opening part of the release film.



2. Mepilex Transfer should overlap the surrounding skin by at least 5 cm.



3. Apply an appropriate absorbing secondary dressing and fixate.

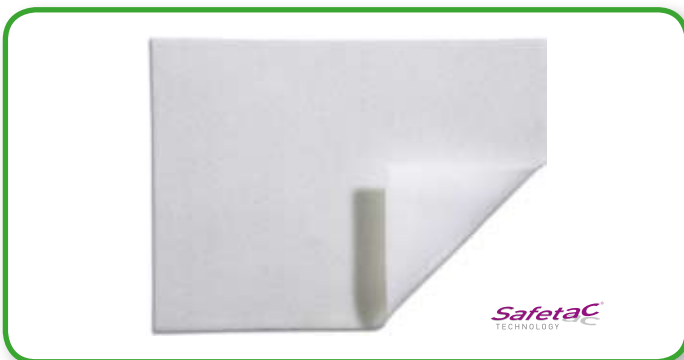
BENEFITS OF MEPILEX TRANSFER NOTE

- Transfers exudate away from the wound
- Atraumatic to the wound and surrounding skin on removal
- Conforms well to body contours
- Can be cut to shape
- Minimises the risk of maceration
- Promotes patient comfort during wear
- Can be left in place during radiotherapy using commonly applied energy ranges and absorbed doses

In case of clinical signs of infection, consult a health care professional for adequate infection treatment.

MEPILEX TRANSFER ORDERING INFORMATION

Art. No	Size cm	Pieces Per Inner	PIP Code	NHS Code
294600	7.5 x 8.5	5	329-5755	ELA336
294700	10 x 12	5	329-5748	ELA337
294800	15 x 20	5	292-4157	ELA111
294502	20 x 50	2	292-4165	ELA112



References:

1. Grocott P, The Palliative Management of Fungating Malignant Wounds, Education Booklet. Wound Care Society. June 2001 Vol. 8, No. 2.



Mölnlycke Health Care Ltd, Arenson Centre, Arenson Way, Dunstable, Bedfordshire LU5 5UL, UK. Tel. +44 (0) 870 6060766, www.molnlycke.co.uk
The Mölnlycke Health Care name and logo, Safetac® and Mepilex® Transfer are registered trademarks of Mölnlycke Health Care AB. ©2009 Mölnlycke Health Care. All rights reserved.