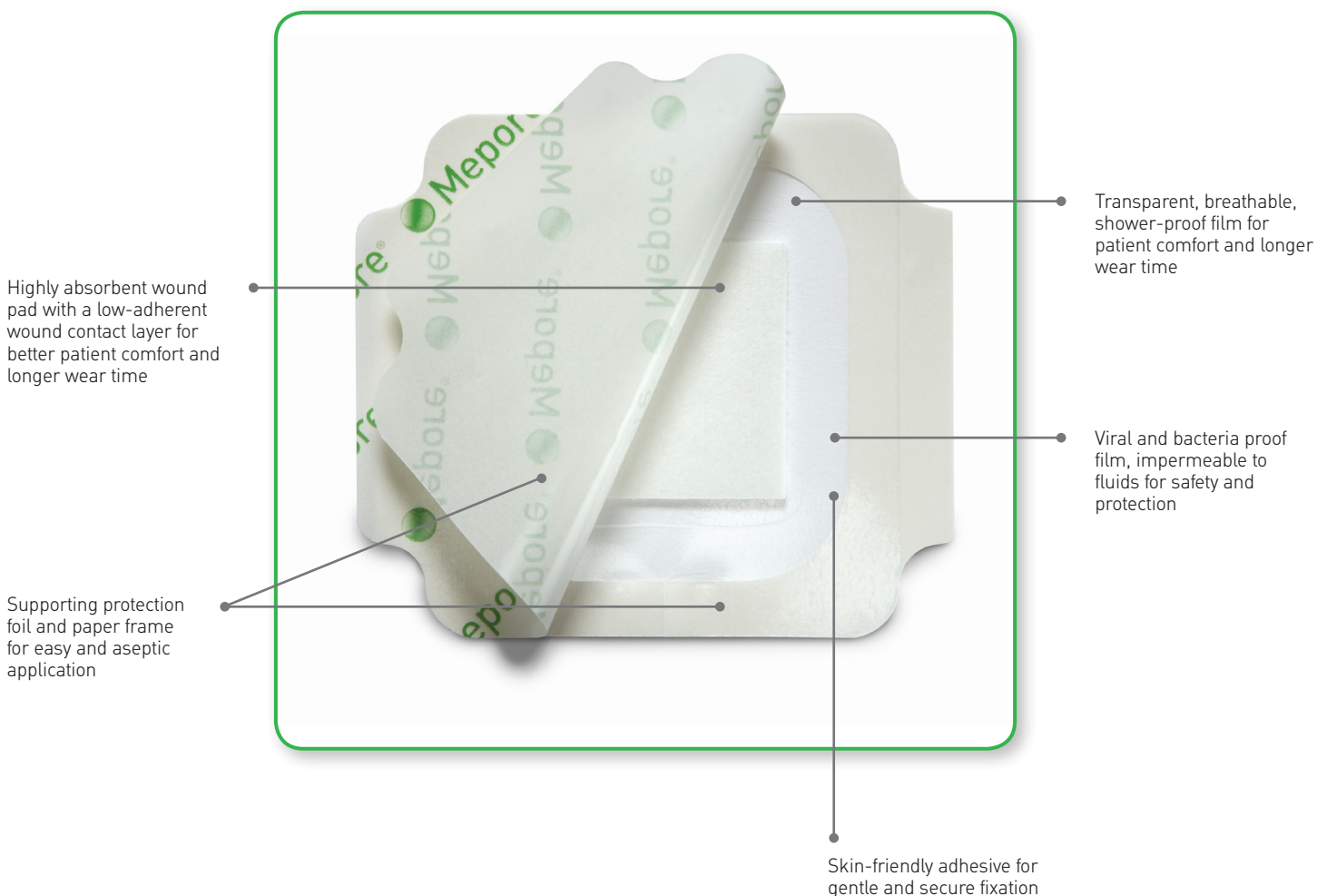


Mepore® Film & Pad

BREATHABLE, TRANSPARENT SELF-ADHESIVE ABSORBENT FILM DRESSING

Mepore Film & Pad is a transparent self adhesive absorbent film dressing. The application system is designed for ease-of-use. The discreet design attracts less attention making your patient feel more comfortable wearing it.



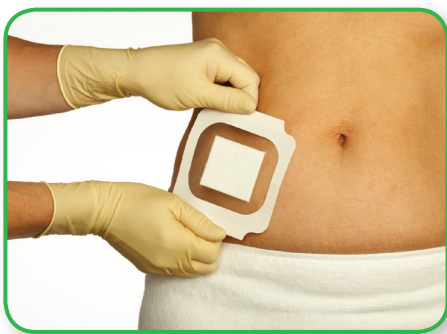
HOW MEPORE FILM & PAD WORKS

Thanks to its highly absorbent pad and high vapour permeable backing film, Mepore Film & Pad offers very good fluid handling. Mepore Film & Pad provides a flexible transparent covering to protect the wound, while conforming to surface irregularities and body contours. The skin-friendly polyacrylate adhesive is designed to be gentle to the skin and at the same time provide secure fixation. Mepore Film & Pad dressings are easy to apply and change aseptically, also when wearing gloves.

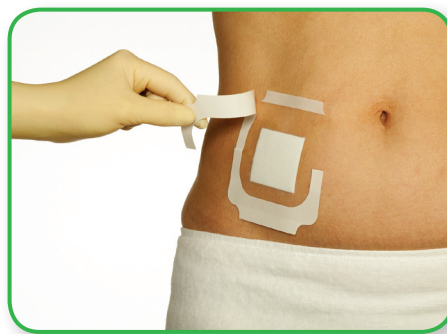
AREAS OF USE

Mepore Film & Pad can be used for a wide variety of wounds which have low to moderate exudate levels. These include surgical wounds, cuts and abrasions.

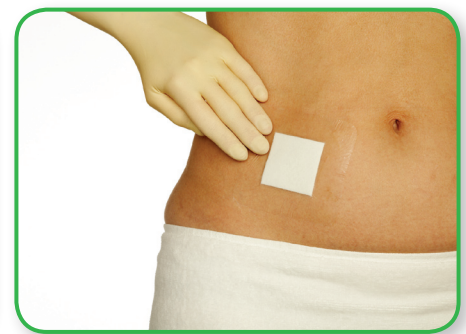
HOW TO USE MEPORE FILM & PAD



Remove the release foil. Position the dressing. Do not stretch the dressing when applying.



When applying the dressing, remove the paper frames and the two white tabs.



To ensure proper adhesion, put your hand over the dressing for a few seconds.

BENEFITS OF MEPORE FILM & PAD

- Low-adherent wound contact layer
- High breathability
- Excellent fluid handling
- Easy application, also when wearing gloves
- Conforms easily to body contours
- Viral and bacteria proof and provides a barrier against leakage
- Gentle and secure fixation
- Skin friendly adhesive
- Allows showering
- Wide assortment

PRECAUTIONS

Mepore Film & Pad should not be applied on patients who are sensitive to acrylic adhesive. Care should be taken to minimize skin tension that can cause mechanical damage to the skin. The wound should be inspected for signs of infection according to clinical practice. In case of clinical signs of infection continued use of Mepore Film & Pad should be determined by a health care professional.

MEPORE FILM & PAD ORDERING INFORMATION

Art. No	Size cm	Pack Size	PIP Codes	NHS Code
275100	4 x 5	85	357-5412	EIJ048
275200	5 x 7 (oval)	85	N/A	EIJ049
275300	5 x 7 (square)	85	357-5420	EIJ055
275400	9 x 10	30	357-5438	EIJ056
275500	9 x 15	30	357-5461	EIJ057
275600	9 x 20	30	357-5487	EIJ058
275700	9 x 25	30	357-5503	EIJ059
275800	9 x 30	25	357-5511	EIJ060
275900	9 x 35	25	357-5529	EIJ061



Mölnlycke Health Care Ltd, Arenson Centre, Arenson Way, Dunstable, Bedfordshire LU5 5UL, UK. Tel. +44 (0) 870 6060766, www.molnlycke.co.uk

The Mölnlycke Health Care name and logo, Mepore® Film & Pad are registered trademarks of Mölnlycke Health Care AB. ©2010 Mölnlycke Health Care. All rights reserved.

UK30450808