



**Toffeln** We've taken steps to make your feet more comfortable



**2017-18** Collection



# The next step

**Toffeln®**  
Performance Footwear

**Toffeln®**  
Performance Footwear

**Toffeln**  
Unit 2 Bridge Road  
Kingswood Bristol  
BS15 4FW UK

T: 0345 500 4433  
F: 0345 500 4434  
E: sales@toffeln.com  
[toffeln.com](http://toffeln.com)



**The key to our key features:**

 CE Marked	 Slip Resistant Sole	 Anti-static Sole	 Leather Insole	 Leather Upper	 Shock Absorbing	 PU Comfort Sole	 Oil Resistant Sole	 Wooden Footbed	 Safety Toe-Cap
 40° Machine Washable	 50° Machine Washable	 80° Machine Washable	 Fully Autoclavable	 Action Breathe Upper	 E-tech Anti-Microbial	 6 Month Guarantee	 12 Month Guarantee		

WearerTech™ Invigorate	8-9
WearerTech™ Rejuvenate	12-13
WearerTech™ Energise	16-17
FlexiKlog®	20-23
UltraLite®	26-29
FlexLite™	30-31
ClassicKlog™	32
ErgoBoot™	33
EziKlog®	34-35
EziProtekta®	36-37
KlimaFlex®	38
SteriKlog™	39
ProFlex™	40
SafetyLite™	41
SportFlex™	42
WorkFlex™	43
SterileClean™	44
EziBag™	45
OdourEliminator™	45
Insoles	46
Surgical Products	47

# At Toffeln, shoe science never stands still.

**Because the healthcare workplace is no place for under-performing shoes.**

At Toffeln, we understand this. We understand how some healthcare professionals are constantly active and others are often completely static.

We also understand that most footwear simply won't do, because it's not designed for the things you do. Which is why we've teamed up with the University of Salford, world leaders in biomechanics, to take an altogether more scientific approach.



**Need help?**  
Call us on **0345 500 4433**  
or send an email to **sales@toffeln.com**



**Prefer browsing online?**  
Check out even more choices at **toffeln.com**

# Enter the WearerTech™ range.

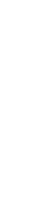
Several thousand steps ahead, in every way.



## Andrew Brown Materials Manager

Shoe size  
**10**

Band  
**3**



Total steps tracked  
**53,531 steps**  
(4 shifts)

Most steps  
in one shift  
**13,787 steps**

### We've spent hours studying the challenges you face every day.

The result is the WearerTech range.

A new generation of Toffeln shoes that are designed to transform comfort, enhance posture and lessen end-of-the day fatigue.

By studying movement over longer periods and applying specialised technologies, we've created a range of shoes with even more ergonomic features for your feet. And of course, they carry it all off in our own inimitable Toffeln style.

### You'll like the way we think on your feet.

We approached a number of healthcare professionals and tracked their WearerTech movements using FitBit™ technology.

The results show that WearerTech Rejuvenate, Energise and Invigorate ranges are not only more comfortable, but more wearable through the back and forth of each very busy day.

**Take a look at the steps we've taken to ensure that our new range is our most advanced yet.**



### A step-by-step guide to choosing Toffeln.

1. Choose your style
2. Use the product code followed by the size required (sizes below 10 will need to be prefixed with a zero). For example if you order the WearerTech Energise in a Size 6 the order code is **206W06**. For this style in a size 10 the order code is **206W10**.
3. Call, email or visit our website to order.



### Our Price Promise

We want everyone to be able to wear Toffeln shoes, we work hard to deliver at the most reasonable price possible. If you find equivalent footwear at a lower price, we will better that price. (Reasonable proof required).



### Your Guarantee

True to our mission, we rigorously check and guarantee the quality of every pair of shoes that we dispatch. So when you receive yours, if they fail to reach the high quality you would expect, we will replace them free of charge. And for further assurance, we are an ISO 9001 quality registered company.

# 44,106 steps later..

Chloe loved the fact her feet weren't aching like they did with other shoes.



**WearerTech**™ INVIGORATE



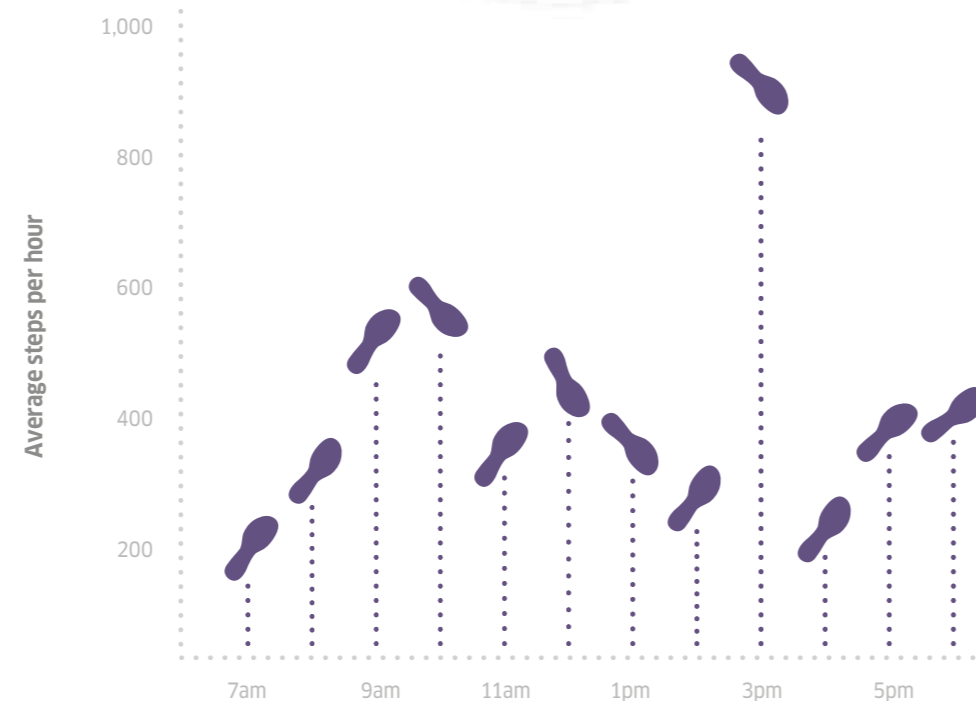
**Chloe Armstrong**  
Scrub Nurse

Shoe size 6 Band 5

Shoes worn  
**WearerTech Invigorate Purple**

Total steps tracked  
**44,106 steps (4 shifts)**

Most steps in one shift  
**14,127 steps**



“Nice and light to wear, the perfect shoes for your working day!”





12  
month guarantee

# The cleverer clog.

This super-lightweight range takes our advanced clog heritage and raises the bar, with a higher closed-in heel, enhanced vents, Grip-Safe® sole intelligence and removable insole. A refreshingly ergonomic design created in collaboration with biomechanics researchers from the University of Salford.

**Cover the ground more comfortably**  
The WearerTech range also comes with a free comfort insole.

- 12 month guarantee
- 
- 
- 
- 

## WearerTech™ INVIGORATE

Available November 2017



UK	Euro
2	35
3	36
4	37
5	38
6	39
6.5	40
7	41
8	42
9	43
10	44
10.5	45
11	46
12	47
13	48

### A closer look

- 1 Closed-In Heel**  
Designed to hold the heel securely, with enhanced arch support. The heel is raised to further enhance comfort.
- 2 Insole Included**  
Walk with even greater comfort with the specially designed WearerTech insole.
- 3 Adjustable Heel Strap**  
Heel strap can be worn in forward or backward positions
- 4 Anti-static System**  
Shock absorbing anti-static heel device specifically incorporated to meet static sensitive situation
- 5 Side Vents**  
Side vents specially shaped to prevent fluid penetration.
- 6 Grip-Safe® Sole**  
This unique sole not only gives excellent slip resistance, but also offers a much greater penetration resistance than other lightweight footwear available.
- SSR Option In Black** SSR  
For those wanting extreme slip resistance, the SSR sole uses world leading technology and offers unrivaled slip resistance, so you can stay comfortable and stay on your feet.

Product codes	Sizes
<b>Metallic Blue</b> 300MB	2-13
<b>Green</b> 300G	2-13
<b>Purple</b> 300PR	2-8
<b>Metallic Fuchsia</b> 300MF	2-8
<b>Orange</b> 300OR	2-13
<b>White</b> 300W	2-13
<b>Navy</b> 300N	2-13
<b>Black</b> 300BK	2-13
<b>Black SSR</b> 301BK	2-13

# 65,407 steps later...

Emma wished she'd discovered our footwear sooner.

**Emma Smith**  
Anaesthetic Nurse

Shoe size 5 Band 5

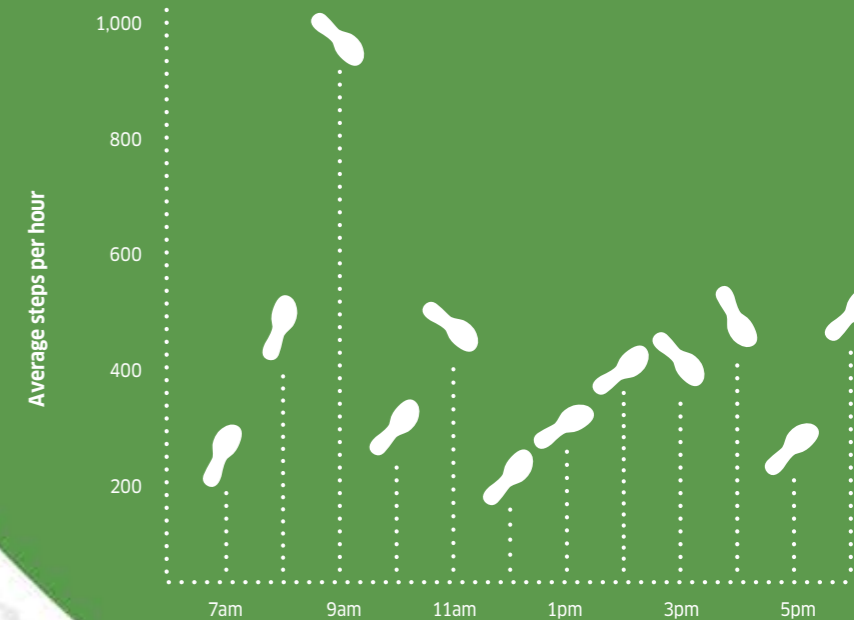
Shoes worn  
WearerTech Rejuvenate  
Metallic Fuchsia

Total steps tracked  
**65,407 steps**  
(4 shifts)

Most steps in one shift  
**16,556 steps**



“A great pair of shoes, it’s like walking around in comfortable, supportive slippers at work.”



**WearerTech**™ REJUVENATE

# Footwear innovation is looking good.

The latest ergonomic technology with a super-slim feminine design. We've used University-inspired research to influence everything about the range, from the intelligent removable insole to the ultra-light Grip-Safe® sole. A UK first, the EVA technology is totally top-to-sole, completely enclosing your foot in resilient, shock-absorbing protection.



## Cover the ground more comfortably

The WearerTech range also comes with a free comfort insole.

12  
-month guarantee-



## WearerTech™ REJUVENATE



Available January 2018

Available January 2018



### A closer look

#### 1 Feminine Styling

Our most feminine design yet ensures that what you wear, is what you want to wear.

#### 2 Closed-in Heel

Designed to hold the heel securely, with enhanced arch support. The heel is raised to further enhance comfort.

#### 3 Insole Included

Walk with even greater comfort with the specially designed WearerTech insole.

#### 4 Side Ventilation

Allows your feet to breathe naturally, keeping them cool throughout the day.

#### 5 Grip-Safe® Sole

This unique sole not only gives excellent slip resistance, but also offers a much greater penetration resistance than other lightweight footwear available.

#### SSR Option In Black **SSR**

For those wanting extreme slip resistance, the SSR sole uses world leading technology and offers unrivaled slip resistance, so you can stay comfortable and stay on your feet.

### Product codes

### Sizes\*

<b>Metallic Blue</b> 100MB	3-8
<b>Metallic Fuschia</b> 100MF	3-8
<b>Black</b> 100BK	3-8
<b>Black SSR</b> 101BK	3-8

\*for wider feet choose one size larger

UK	Euro
3	36
4	37
5	38
6	39
6.5	40
7	41
8	42



**Damian Johnston**  
Support Worker

Shoe size 9    Band 2

Shoes worn  
**WearerTech  
Energise  
Metallic Blue**

Total steps tracked  
**91,070 steps**  
(5 shifts)

Most steps  
in one shift  
**26,144 steps**

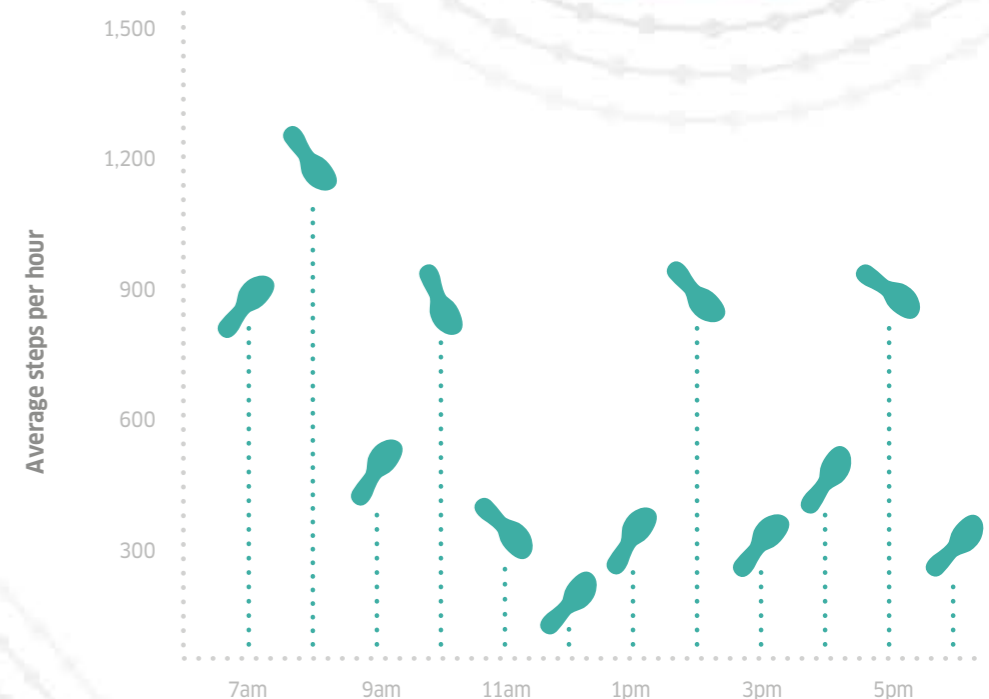
# 91,070 steps later...

Damian realised our ergonomic approach is an exact science.



**WearerTech**™ ENERGISE

“The Energise shoe is very comfortable, has a shaped snug fit for less friction on pressure points, the tapered heel and toe keeps sure footing even on slippery surfaces. The most impressive all round footwear.”





# Good to go, wherever you go

The UK-first EVA enclosed trainer, designed to deliver all of the wear with none of the tear. A super durable, superior lightweight shoe complete with Grip-Safe® sole and removable insole. Ergonomically designed with input from the University of Salford to deliver impressive performance characteristics.



## Cover the ground more comfortably

The WearerTech range also comes with a free comfort insole.



# WearerTech™ ENERGISE

Available January 2018



## A closer look

### 1 Elasticated Gusset

Slip on with ease and enjoy a secure fit.

### 2 Side Ventilation

Allows your feet to breathe naturally, keeping them cool throughout the day.

### 3 Insole Included

Walk with even greater comfort with the specially designed **WearerTech™** insole.

### 4 Stylish Rubber Laces

Enjoy the laced up look without having any time-consuming laces to tie.

### 5 Grip-Safe® Sole

This unique sole not only gives excellent slip resistance, but also offers a much greater penetration resistance than other lightweight footwear available.

### SSR Option In Black **SSR**

For those wanting extreme slip resistance, the SSR sole uses world leading technology and offers unrivalled slip resistance, so you can stay comfortable and stay on your feet.

## Product codes

Product codes	Sizes
White 200W	3-12
Metallic Blue 200MB	3-12
Metallic Fuchsia 200MF	3-8
Black 200BK	3-12
Black SSR 201BK	3-12

UK	Euro
3	36
4	37
5	38
6	39
6.5	40
7	41
8	42
9	43
10	44
10.5	45
11	46
12	47



# 28,341 steps later...

Sue loved that her feet weren't hurting like they did with other shoes.

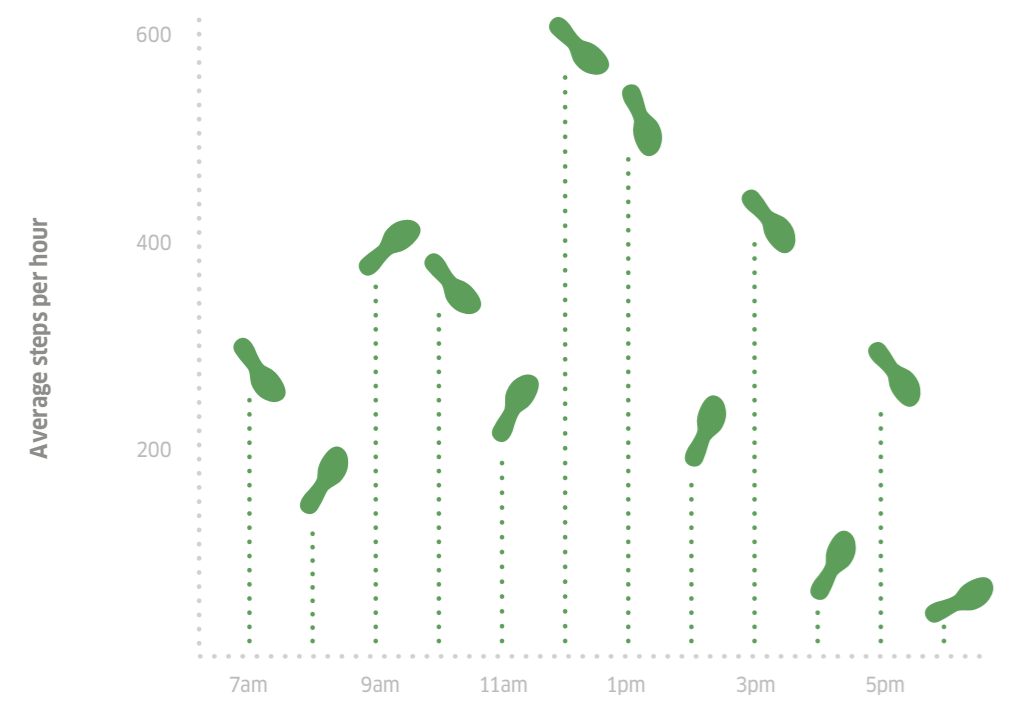
**Sue Roe**  
Theatre Team Manager

Shoe size **5** Band **7**

Shoes worn  
**FlexiKlog**  
**Floral**

Total steps tracked  
**28,341 steps**  
**(4 shifts)**

Most steps in one shift  
**8,469 steps**



**FlexiKlog**<sup>®</sup>

“Stylish, bright, cheerful and very comfortable. I love them!”

12  
month guarantee



# FlexiKlog® Supports good posture

FlexiKlog's built-in arch and slightly raised heel helps keep your body in its correct position, so you're much more comfortable all day long and there's freedom for your toes to spread out, thanks to the high toe box.



With heel strap 0723



Without heel strap 0747



## A closer look

### 1 Soft Leather Insole

Soft leather insole cushioned for ultimate comfort.

### 2 Leather Upper

PU coated easy-to-clean leather uppers.

### 3 Anti-static Sole

Shock absorbing sole specifically incorporated to meet static sensitive situations.

### 4 High Toe Box

The high toe box gives room for your toes to spread.

### 5 Ergonomically Designed

The fully flexible sole is ergonomically designed to provide day-long comfort.

## Product codes

With heel strap

**Navy** 0723N  
**White** 0723W  
**Black** 0723BK  
**Sky Blue** 0723SB

Without heel strap

**Navy** 0747N  
**White** 0747W  
**Black** 0747BK

## Sizes

3-12  
3-12  
3-12  
3-8

3-12  
3-12  
3-12

UK	Euro
3	36
4	37
5	38
6	39
6.5	40
7	41
8	42
9	43
10	44
10.5	45
11	46
12	47

FlexiKlog®

You'll like the way we think on your feet



12  
-month guarantee-



### A closer look

- 1 Soft Leather Insole**  
Soft leather insole cushioned for ultimate comfort.
- 2 Leather Upper**  
PU coated easy-to-clean leather uppers.
- 3 Anti-static Sole**  
Shock absorbing sole specifically incorporated to meet static sensitive situations.

- 4 High Toe Box**  
The high toe box gives room for your toes to spread.
- 5 Ergonomically Designed**  
The fully flexible sole is ergonomically designed to provide day-long comfort.

Product codes	Sizes
<b>Floral</b> 0724FL	3-8
<b>Blue Flower</b> 0724BFL	3-8
<b>Butterfly</b> 0724BUP	3-8

UK	Euro
3	36
4	37
5	38
6	39
6.5	40
7	41
8	42
9	43

# 46,506 steps later...

Gavin was thankful for more comfort with every step.

**Gavin Wild**  
Nurse in charge

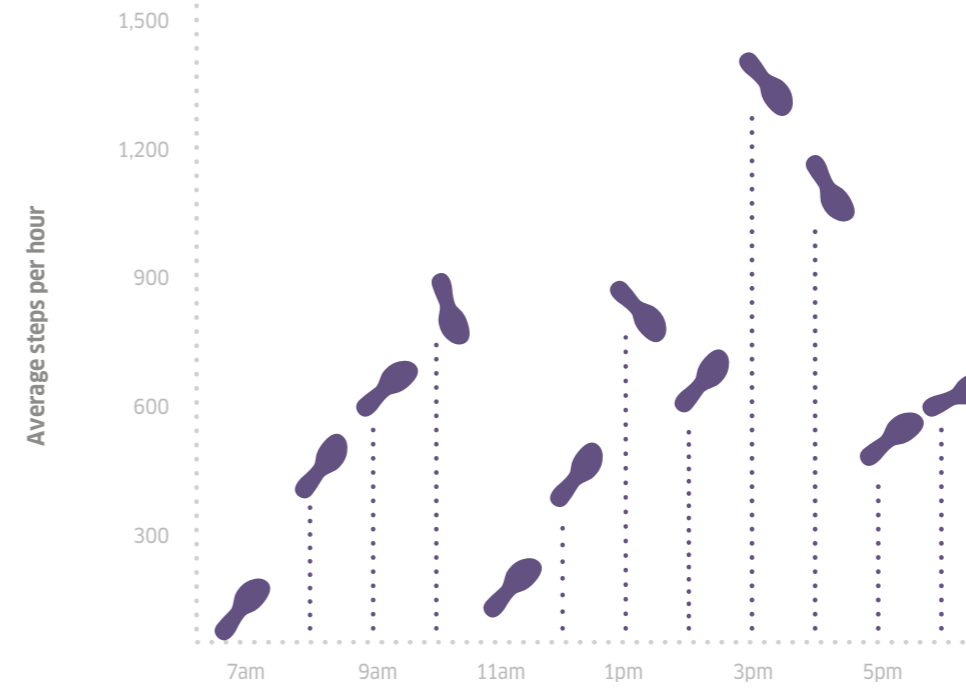
Shoe size **11**    Band **6**

Shoes worn  
**UltraLite Navy (0698)**

Total steps tracked  
**46,506 steps (4 shifts)**

Most steps in one shift  
**15,623 steps**

“I’ve found the new Toffeln footwear to be extremely comfortable.”



**UltraLite®**



12  
month guarantee



UltraLite®

# Enlightenment for your feet

If you like featherweight footwear, you'll love the UltraLite. We've gone to town making it one of the lightest and most comfortable professional work clogs in the world.



With heel strap & without vents 0699



With vents 0698



Without heel strap or vents 0601



With vents 0600



## A closer look

**1 Adjustable Heel Strap**  
Can be worn in forward or back position. (on styles 0698 and 0699).

**2 Ergonomically Designed**  
Soft leather insole cushioned for ultimate comfort.

**3 Leather Upper**  
PU coated easy-to-clean leather uppers.

**4 Anti-static Sole**  
Shock absorbing sole specifically incorporated to meet static sensitive situations.

## Product codes

With heel strap & without vents  
**White/Pink** 0699WP 3-8  
**White** 0699W 3-12  
**Black** 0699BK 3-12

With heel strap & vents  
**Navy** 0698N 3-12  
**White** 0698W 3-12

Without heel strap or vents  
**White** 0601W 3-12  
**Navy** 0601BK 3-12  
**Black** 0601BK 3-12

Without heel strap & with vents  
**Navy** 0600N 3-12  
**White** 0600W 3-12

## Sizes

UK	Euro
3	36
4	37
5	38
6	39
6.5	40
7	41
8	42
9	43
10	44
10.5	45
11	46
12	47



UltraLite®

# Breathing new life into healthcare footwear



## A closer look

**1 Adjustable Heel Strap**  
Can be worn in forward or back position. (on styles 0698 and 0699).

**2 Ergonomically Designed**  
Soft leather insole cushioned for ultimate comfort.

**3 Leather Upper**  
PU coated easy-to-clean leather uppers.

**4 Anti-static Sole**  
Shock absorbing sole specifically incorporated to meet static sensitive situations.

Product codes      Sizes

<b>Coloured Dogs</b> 0696CD	4-7
<b>Shiny Blue</b> 0696SBL	3-8
<b>Shiny Purple</b> 0696SPR	3-8
<b>Shiny Hot Pink</b> 0696SHP	3-8

UK	Euro
3	36
4	37
5	38
6	39
6.5	40
7	41
8	42



## FlexLite®

# Great value and flexibility

With its flexible anti-static soles, soft leather insoles and easy-to-clean leather uppers, our FlexLite range will take the weight off your feet.



With heel strap 0599



Without heel strap or vents 0501



With vents 0500



### A closer look

#### 1 Leather Insoles

Fitted with leather insoles.

#### 2 Anti-static System

Flexible PU anti-static soles.

#### 3 Leather Upper

PU coated easy-to-clean leather uppers.

### Product codes

With heel strap  
**Black** 0599BK  
**Navy** 0599N  
**White** 0599W

Without heel strap or vents  
**Black** 0501BK  
**Navy** 0501N  
**White** 0501W

Without heel strap & with vents  
**White** 0500W

### Sizes

3-13  
 3-13  
 3-13

3-13  
 3-13  
 3-13

3-13

UK	Euro
3	36
4	37
5	38
6	39
6.5	40
7	41
8	42
9	43
10	44
10.5	45
11	46
12	47
13	48



## ClassicKlog™

# For lovers of traditional wood

If you love the firmness and feel of natural wood supporting you underfoot, this classic clog with wipe-clean leather uppers is for you.



12  
-month guarantee-

UK	Euro
3	36
4	37
5	38
6	39
6.5	40
7	41
8	42
9	43
10	44
10.5	45
11	46
12	47



### A closer look

#### 1 Wooden Footbed

Enjoy the firm wooden footbeds that give your body the correct anatomical support.

#### 2 Anti-static System

Available with 020 only.

#### 3 Leather Upper

Coated leather uppers make it easy for you to keep them clean.

### Product codes

### Sizes

<b>White</b> 020W	3-12
<b>Black</b> 310BK	3-12
<b>Navy</b> 310N	3-12
<b>Red</b> 310R	3-12

## ErgoBoot™

# The best protection from fluids

These white unisex boots will give you the strength and blissful lightness you can expect from Toffeln, as well as non-marking soles. They are washable to 50°C.



12  
-month guarantee-

UK	Euro
3	36
4	37
5	38
6	39
6.5	40
7	41
8	42
9	43
10	44
10.5	45
11	46
12	47
13	48
14	49
15	50

### A closer look

#### 1 Non-Marking Soles

**2 Anti-static**  
Flexible PU anti-static soles.

#### 3 Offers Full Protection

Offers the best protection from fluids.

### Product codes

### Sizes

<b>Full</b> 0153W	3-13
<b>Half</b> 0900W	3-15

# Unrivalled comfort defined

The lightweight, anti-microbial E-Tech™ material and unique Grip-Safe® slip-resistant and anti-static sole make EziKlog® the safest and most comfortable shoe in its class.



Pro Air with side vents 0815



Pro without side vents 0825



Insoles 0802



UK	Euro
3	36
4	37
5	38
6	39-40
7	41
8	42
9	43
10	44-45
11	46
12	47



## A closer look

### 1 Closed-in Heel

Specially designed to hold the heel securely.

### 2 Adjustable Heel Strap

Heel strap can be worn in forward or back positions.

### 3 EziKlog® Insole

A cushioned insole that can be used with the EziKlog®. This is sold separately.

### 4 Anti-static System

Shock absorbing anti-static heel device specifically incorporated to meet static sensitive situations.

### 5 Grip-Safe® Sole

This unique sole not only gives excellent slip resistance, but also offers a much greater penetration resistance than other lightweight footwear available.

### 6 Side Vents

Side vents specially shaped to prevent fluid penetration.

## Product codes

Pro Air with side vents

- White** 0815W
- Navy** 0815N
- Light Blue** 0815LB
- Black** 0815BK

Pro without side vents

- White** 0825W
- Navy** 0825N

**Insoles** 0802

## Sizes

- 3-12
- 3-12
- 3-11
- 3-12
- 3-12
- 3-12
- 3-12



# EziProtekta®

## Unsurpassed for safety

Choose EziProtekta® if you could be in danger of dropping something on your foot, or of slipping. They are super-light, with a strong and light-as-air safety toe cap and Grip-Safe® slip-resistant sole.

EziProtekta Insoles 803



With side vents 845



Without side vents 855



### A closer look

#### 1 Closed-in Heel

Specially designed to hold the heel securely.

#### 2 EziProtekta® Insole

A complimentary insole is provided with every EziProtekta® but its use is optional.

#### 3 Adjustable Heel Strap

Heel strap can be worn in forward or back positions.

#### 4 Side Vents (845 style only)

Side vents specially shaped to prevent fluid penetration.

#### 5 Composite Toe Cap

Tested to 200 joules, this toe cap offers protection against a high level of impact and compression.

#### 6 Grip-Safe® Sole

This unique sole not only gives excellent slip resistance, but also offers a much greater penetration resistance than other lightweight footwear.

### Product codes

With side vents

**White** 845W

**Black** 845BK

Without side vents

**White** 855W

**Black** 855BK

**Graphite Grey** 855GR

**Hot Pink** 855HP

**Insoles** 803

### Sizes

3-12

3-12

3-12

3-12

3-12

3-11

3-12

UK	Euro
3	36
4	37
5	38
6	39-40
7	41
8	42
9	43
10	44-45
11	46
12	47

12  
month guarantee

KlimaFlex™

## Washable to 80°C

The KlimaFlex comfortable PU material provides a firm footbed.

Without side vents 0160



With side vents 0165



With heel strap 0168



UK	Euro
2/3	34/35
4	36
5	37
6	38
6.5	39
7	40
8	41
9	42
9.5	43
10	44
11	45
12	46
12.5/13	47/48
14/15	49/50

SteriKlog™

## Ideal for visitors & short-stay personnel

For when it's essential to have the ultimate in hygiene, this long-lasting, ergonomically-shaped shoe is made from strong thermoplastic material, which can be autoclaved at 134°C.



UK	Euro
3-4	35-36
4.5-5	37-38
6-6.5	39-40
7-7.5	41-42
8-9	43-44
10-11	45-46



### A closer look

- 1 Heel Strap (0168 style only)**  
Heel strap can be worn in forward or back positions.
- 2 Side Vents (0165 & 0168)**  
Side vents specially shaped to prevent fluid penetration.

- 3 Lightweight PU Material**  
Helps cushion your walk.
- 4 Nature-Form Footbed**  
Provides long lasting comfort.

### Product codes

Style	Color	Code
With heel strap	Navy	0168N
With heel strap	White	0168W
Without side vents	Navy	0160N
Without side vents	White	0160W
With side vents	Navy	0165N
With side vents	White	0165W
With side vents	Fuchsia	0165F
With side vents	Mid Blue	0165MB

### Sizes

2-15
4-12
2-15
4-12
2-15
4-12
4-8
2-12



### A closer look

- 1 Thermoplastic Material**  
Long-lasting, strong thermoplastic material.
- 2 The Footbed Shape**  
Allows your feet to spread naturally.

### Product codes

Green	058G
White	058W

### Sizes

3-11
3-11



ProFlex™

## Lace-up or slip on shoes

When you prefer an enclosed shoe to a clog, ProFlex™ comes in. Made from Action-Breathe uppers, they are waterproof and stronger than leather, allowing your feet to breathe.



UK	Euro
3	36
4	37
5	38
6	39
6.5	40
7	41
8	42
9	43
10	44
10.5	45
11	46
12	47

Lace up 06195



Slip on 06165



### A closer look

- 1 Ergonomically Designed Footshape**  
Allows your feet to spread naturally.
- 2 High Grade Materials**  
Selected to give you enhanced levels of comfort.

- 3 High-Toe Box**  
Prevents your feet being pinched.
- 4 Slip-Resistant Soles**  
Giving you the extra protection.

### Product codes

Lace up	<b>Black</b> 06195BK
Slip on	<b>Black</b> 06165BK <b>White</b> 06165W

### Sizes

3-12
3-12
3-12

SafetyLite™

## Extra protection all built in

You'd hardly know these are safety shoes; they're light, supremely comfortable and sport high tech, ultra-healthy Action-Breathe uppers.

The wide safety toe cap means no pinching, and the slip-resistant soles could save your day.



### A closer look

- 1 High Grade Materials**  
Have been carefully selected to give you an enhanced level of comfort.
- 2 Slip-Resistant Soles**  
You'll appreciate the extra protection that the slip-resistant soles give you on slippery surfaces.

- 3 Ergonomically Designed**  
Foot shape provides room for your feet to spread naturally, and a wider safety toe-cap prevents toes from being pinched.

Slip on clog 03155



Slip on 04165



Lace up 04195



### Product codes

Slip on clog	<b>White</b> 03155W <b>Black</b> 03155BK
Slip on	<b>White</b> 04165W <b>Black</b> 04165BK
Lace up	<b>White</b> 04195W <b>Black</b> 04195BK

### Sizes

3-12
3-12
3-12
3-12
3-12



UK	Euro
3	36
4	37
5	38
6	39
6.5	40
7	41
8	42
9	43
10	44
10.5	45
11	46
12	47

## SportFlex™

# Trainers with a spring in the step

What could be better than a pair of trainers designed for your working day, with extra padding to hug your feet and cushion your walk?

SportFlex™ are unisex and have slip resistance built in too.

Cushion sole 163



Thin sole 0161



UK	Euro
3	36
4	37
5	38
6	39
6.5	40
7	41
8	42
9	43
10	44
10.5	45
11	46
12	47



### A closer look

#### 1 Padded Uppers

Soft padded uppers and insoles hug your feet and cushion your walk.

#### 2 Supple Leather Uppers

Have a protective coating and can be wiped clean.

#### 3 Anti-static System

Anti-static heel sole specifically incorporated to meet static sensitive situations (only available in code 0161).

### Product codes

Cushion Sole

**Black** 163BK  
**White** 163W

### Sizes

3-12  
3-12

Thin Sole

**Black** 0161BK  
**White** 0161W

3-11  
3-11

## WorkFlex™

# Unisex trainers for safety

Who could tell that these sporty, ergonomically-designed trainers conceal a safety toe cap and slip-resistant soles? Choose these when you want to dash around at work, be thankful that your trainers are protecting you.



### A closer look

#### 1 Soft Padded Uppers and Insoles

Conceal the wide safety toe-caps that allow more room for your toes.

#### 3 Slip-Resistant Soles

You'll appreciate the extra protection that the slip-resistant soles give you on slippery surfaces.

### Product codes

**Black** 05100BK

### Sizes

3-12



UK	Euro
3	36
4	37
5	38
6	39
7	41
8	42
9	43
10	44
11	46
12	47



# SterileClean™

## Fast, safe and simple to use

Following the many requests for a simple footwear disinfecting system, we decided to research what infection control professionals advised. This research led us to produce our SterileClean™ system.

This system is simple and safe to use on all Toffeln products coming out of contaminated areas. The whole process is generally completed in less than one minute.

## Step by step guide to SterileClean™

SterileClean TPH1



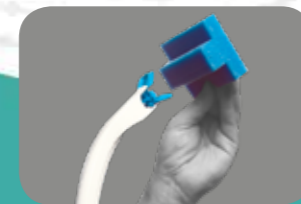
Disinfectant 500ml TSS1



Sponge TCP50



“It’s so fast and effective and it can be used on all Toffeln products. It’s ergonomic design helps to make it as easy as possible to use.”



1 Connect cleaning pad onto handle.



2 Spray solution onto cleaning pad.



3 Wipe over footwear.



4 Discard cleaning pad.

EziBag EB01



## EziBag™

**This bag's got your name on it.  
And your shoes in it.**

Shoes have a habit of walking when other theatre staff pick them up accidentally. So this nameable bag will make sure your Toffeln shoes, stay yours.

EziBag EB01

Odour Eliminator 5500



## OdourEliminator™

**Perfect for any shoe type**

- Highly effective footwear spray
- Fast action antibacterial and anti-fungal treatment
- Eliminates unpleasant odours
- Prolongs the life of footwear
- Extra-strength formula

# PowerLite™

## Power through the day without aches or pain

For those who suffer with foot problems, these ergonomic inserts prevent and alleviate aches associated with plantar fasciitis, heel or arch pain and discomfort, mild pronation and sore/aching feet.

The Bi-Layer design has a firm but flexible support shell, built-in foot arch support, stability-enhancing heel cradle and ultra-thin VCT cushioning for complete comfort.

Only available with the WearerTech range.

### PowerLite Womens 804

Code	UK	Euro
8040305	3-5	36-38
8040607	6-7	39-41
8040809	8-9	42-43

### PowerLite Mens 805

Code	UK	Euro
8050607	6-7	39-41
80508	8	42
80509	9	43
80510105	10-10.5	44-45
8051112	11-12	46-47

## Insole Range

### Comfortable cushioning

Our range of insoles offer extra support when you need it. All are available in sizes 3-12.



EziKlog 0802



EziProtekta 803



Toffeln Insoles 4020



## UltraView™ Headlight

### One of the lightest & brightest

The SHL250 cable-free super-bright 250,000 LUX headlight is a real help to surgeons. Weighing only 312g and with a comfortable padded headband, its beam can be adjusted easily from wide-reaching, down to a very precise 90 millimetres.

**Request a free trial!**  
Call or email to try for yourself.

UltraView Headlight SHL250



## TripStop®

### Protect your staff from trips and falls

Use this brightly coloured, single-use cable/pipe cover to grab everyone's attention and reduce the risk of slips, trips and falls in your workplace.

**Request a free sample!**  
Call or email for yours.

TripStop TS40R



## ViewMax®

### Clearly a better choice for procedures.

ViewMax activates in seconds to warm laparoscopes and endoscopes to body temperature, preventing lens condensation. Thanks to its convenient popper fastening no tapes are required, speeding up procedures whilst reducing costs.

ViewMax 25pk TC65SCWM