

BactiClear®

ANTIMICROBIAL

1 Litre Liners

VACSAX BACTICLEAR ANTIMICROBIAL RANGE
OF DISPOSABLE SUCTION LINERS


INSTRUCTIONS FOR USE FOR ANTIMICROBIAL LINERS


Connection and use:

Read all instructions thoroughly before attempting to use this equipment, pay special attention to warnings and precautions - these are indicated thus 

Before use check the product has not reached its use by date. This can be found printed on the liner and packaging label.


- 1 Ensure rigid canister is clean - wipe the inner rim surface with a damp cloth if necessary. **Use the correct size canister for your liner!**
- 2 Remove liner from carton.
- 3 Place liner into rigid canister and push firmly. Check patient port is facing forward for ease of connection.
- 4 Push the taper connector on the vacuum tubing from suction controller into the vacuum port with a twisting motion
- 5 Connect the patient tubing firmly to the patient port to ensure a good fit. Turn the Suction controller on to MAXIMUM and then set to desired level.

 **6 PRE-USE CHECK: Confirm that suction is present at the patient tube by manually occluding the patient tube end before proceeding.**

 **If liner is set up prior to use and may not be used for some considerable time. Please ensure that the cap is kept in a clean condition in accordance with your hospital policy.**

AFTER USE:

ENSURE You wear gloves.

 **IMPORTANT! Do not turn off vacuum source while disconnecting patient tubing. If system has been overfilled fluids may pass back down patient tubing!**

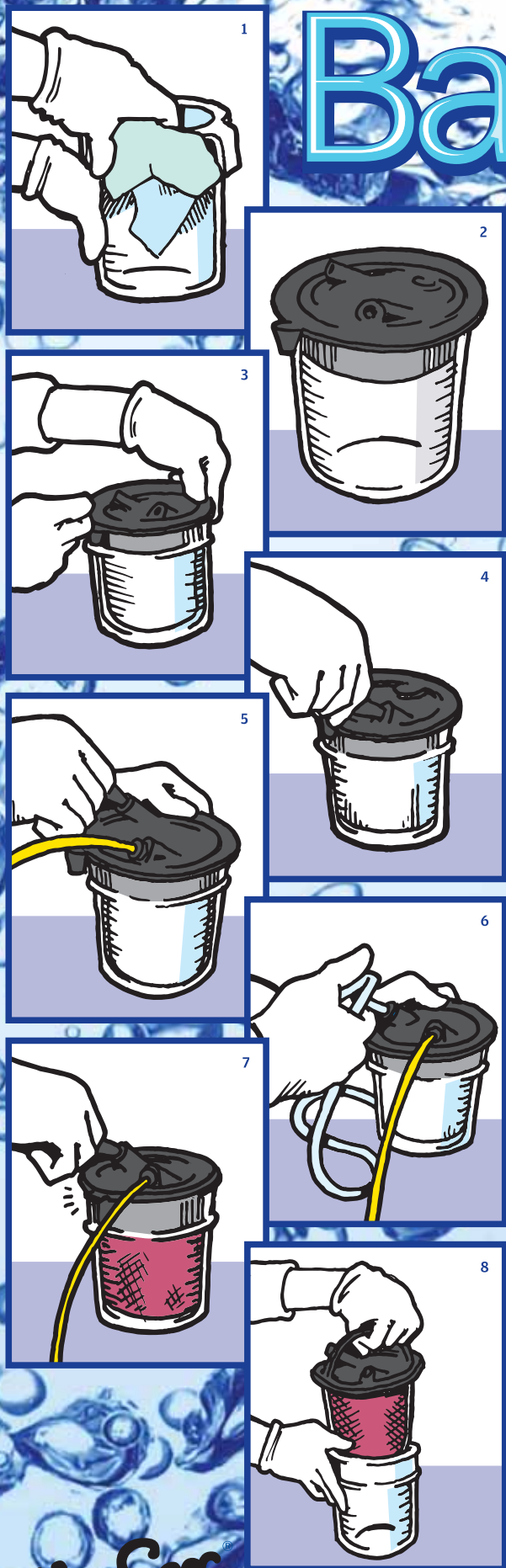
7 Remove patient tubing and fit stopper located on rim into port

8 Remove the vacuum connection and using the handles, lift the liner out of its canister

 **Refer to disposal instructions**

These instructions should be used in conjunction with the instructions supplied with the liner. DO NOT dispose of connection tubing kit unless contaminated.

Note: Once a liner is installed check vacuum and flow regularly. Before use check the product has not reached its use by date. This can be found printed on the liner and packaging label.



VacSax

VacSax Limited
Western Wood Way, Langage Science Park,
Plymouth, PL7 5BG, UK.
T: +44 (0)1752 337000 F: +44 (0)1752 337600
E: sales@vac.sax.com

www.vacsax.com

BactiClear[®]

ANTIMICROBIAL

2 Litre Liners

VACSAX BACTICLEAR ANTIMICROBIAL RANGE OF DISPOSABLE SUCTION LINERS


INSTRUCTIONS FOR USE FOR ANTIMICROBIAL LINERS


Connection and use:

Read all instructions thoroughly before attempting to use this equipment, pay special attention to warnings and precautions - these are indicated thus 

Before use check the product has not reached its use by date. This can be found printed on the liner and packaging label.


- 1 Ensure rigid canister is clean - wipe the inner rim surface with a damp cloth if necessary. **Use the correct size canister for your liner!**
- 2 Remove liner from carton.
- 3 Place liner into rigid canister and push firmly. Check patient port is facing forward for ease of connection.
- 4 Push the taper connector on the vacuum tubing from suction controller into the vacuum port with a twisting motion
- 5 Connect the patient tubing firmly to the patient port to ensure a good fit. Turn the Suction controller on to MAXIMUM and then set to desired level.

 **6 PRE-USE CHECK: Confirm that suction is present at the patient tube by manually occluding the patient tube end before proceeding.**

 **If liner is set up prior to use and may not be used for some considerable time. Please ensure that the cap is kept in a clean condition in accordance with your hospital policy.**

AFTER USE:

ENSURE You wear gloves.

 **IMPORTANT! Do not turn off vacuum source while disconnecting patient tubing. If system has been overfilled fluids may pass back down patient tubing!**

7 Remove patient tubing and fit stopper located on rim into port

8 Remove the vacuum connection and using the handles, lift the liner out of its canister

 **Refer to disposal instructions**

These instructions should be used in conjunction with the instructions supplied with the liner. DO NOT dispose of connection tubing kit unless contaminated.

Note: Once a liner is installed check vacuum and flow regularly. Before use check the product has not reached its use by date. This can be found printed on the liner and packaging label.



www.vacsax.com

