

Cellometer[®] Spectrum

Image Cytometry System
for 20 μ l Cell-Based Assays

Cell Cycle
Apoptosis
Cell Mediated Cytotoxicity
Cell Counting and Viability
Interchangeable Fluorescent Modules



Features of the Spectrum™ Image Cytometry System

✓ All-in-One System

Basic cell counting, primary cell viability, and cell-based assays.

✓ Dual-Fluorescence for Accurate Primary Cell Viability

No interference from red blood cells. Analyze bone marrow, peripheral blood, and cord blood without lysing.

✓ Unique Algorithms for Advanced Cell Analysis

Determine concentration and viability of hepatocytes, adipocytes, and other sophisticated cell types.

✓ Fast Results

Obtain cell images, counts, size measurements and viability calculations in < 30 seconds per sample.

Simple 20 µl Cell-Based Assays

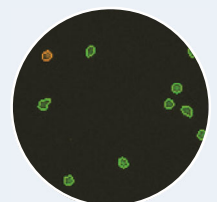
- Pre-qualified reagents
- Small 20 µl sample size
- Simple, image-based analysis
- Pre-defined instrument settings
- Assay-specific data templates
- Accurate, consistent results



1. Pipette 20 µl



2. Insert slide & count



3. Get images & data

Cell Types for Many Research Areas

Optimized for primary cell analysis

PBMCs	Epithelial Cells
Stem Cells	Keratinocytes
Adipocytes	Lymphocytes
Neural Cells	Splenocytes
Hepatocytes	Monocytes
Dendritic Cells	

- **Clinical Immunology:** PBMCs
- **Diabetes / Obesity:** Adipocytes
- **Immunotherapy:** Leukocytes
- **Microbiology:** Yeast (Spectrum 10x)
- **Oncology:** Cell Lines
- **Regenerative Medicine:** Stem Cells
- **Toxicology:** Hepatocytes
- **Transplantation:** Nucleated Cells
- **Vaccine Development:** Splenocytes

Advantages of Cellometer Image Cytometry

✓ Cell Imaging

- Visually check cell morphology
- Ensure only cells of interest are counted
- Archive and re-analyze cell images
- Export images for publication

✓ Proprietary Pattern-Recognition Software

- Count individual cells in clusters
- Count irregular-shaped cells
- Count cells based on size
- Eliminate debris from cell counts

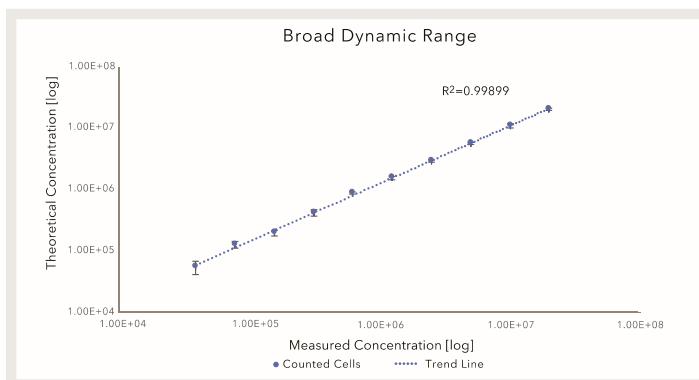
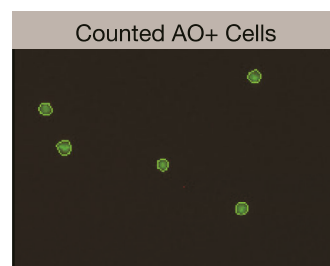
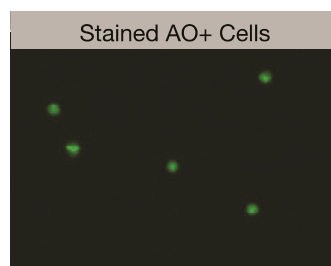
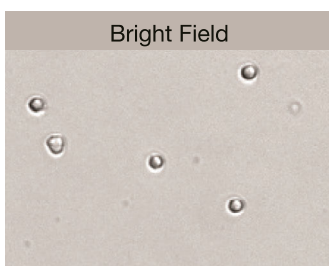
✓ Non-Fluidic Platform

- Disposable counting chambers - no washing
- Compatible with fragile cells
- Maintenance-free
- Robust optics modules and LED light sources

✓ IQ/OQ Validation and GMP/GLP Accessories

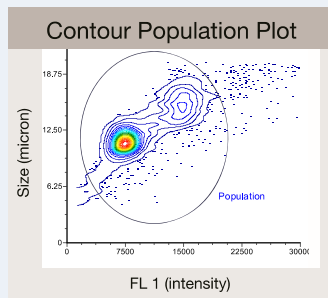
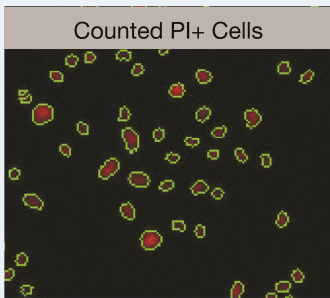
- Installation Qualification reagents/protocol
- Operational Qualification reagents/protocol
- On-site IQ or OQ Performance
- GMP/GLP Software Module

Accurate Cell Counting

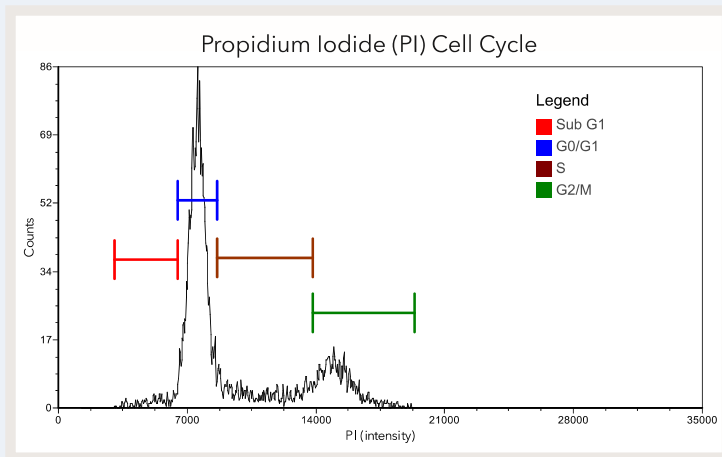


- Automatic identification of Acridine Orange (AO) stained cells (shown above)
- Image and count up to 2×10^7 cells/mL
- Image acquisition and analysis: 30 seconds/sample for a 3-channel assay
- Versatile platform - use for routine cell counting and complex cell-based assays

Export to FCS Express™* for Flow-Like Data

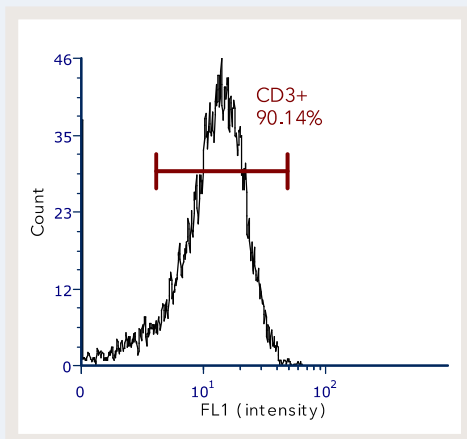
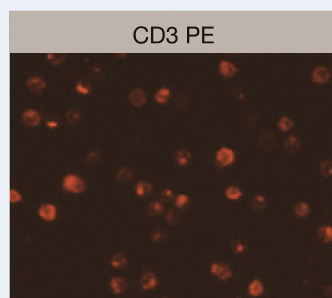
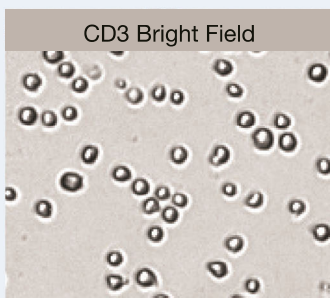


- Export image data into flow cytometry software: FCS Express™
- Simple work flow: No fluid-stream, No PMT voltages, No forward/side scatter
- Easily perform data analysis using pre-designed templates
- Quickly plot cell population data as a: histogram, scatter, dot or contour plot

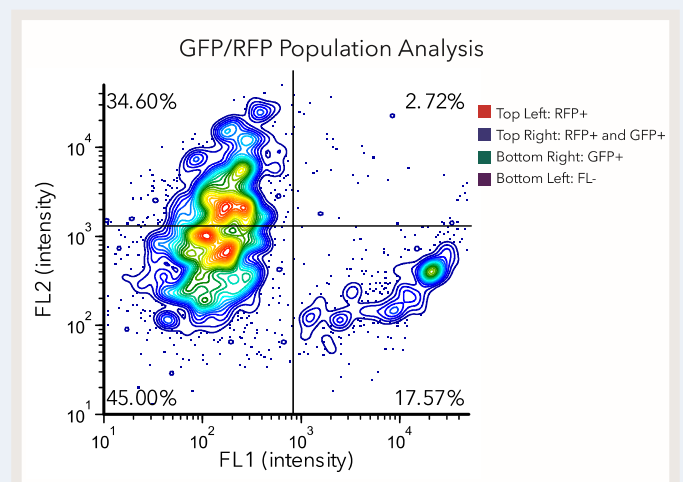


Cell Population	% of Gated Cells	Concentration (10 ⁶ cells/mL)
Total	100	3.18
Sub G1	3.8	0.12
G0/G1	61.9	1.97
S	15.3	0.49
G2/M	19	0.60

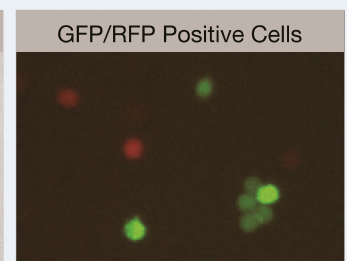
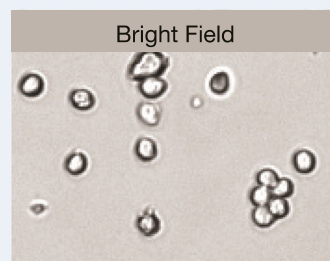
* FCS Express™ Flow Cytometry software is a product of De Novo Software™ and is included with the Cellometer Spectrum™



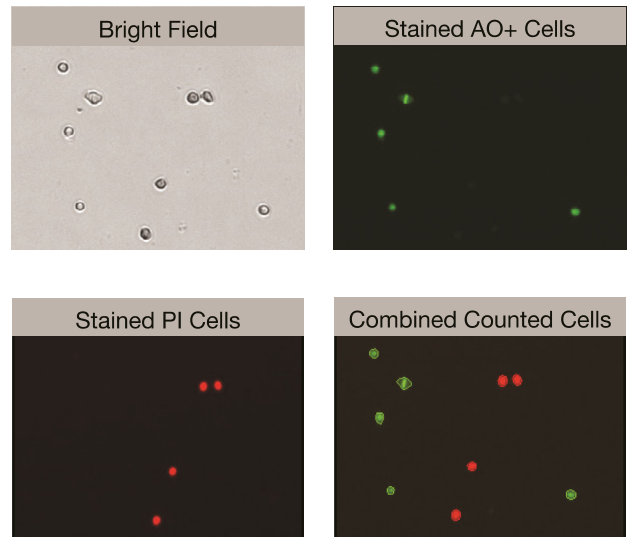
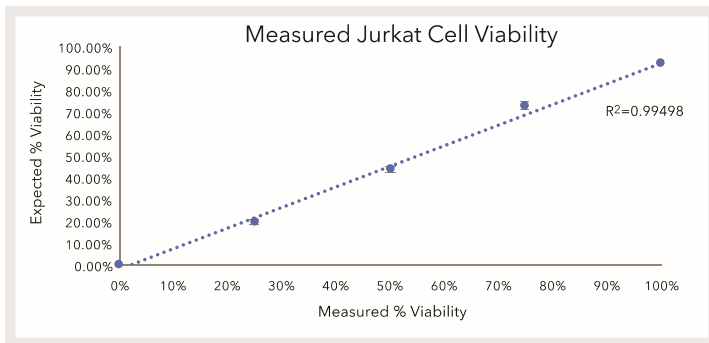
Histogram of PE CD3+ Jurkat cells



Contour map of Jurkat cells, showing GFP+ and RFP+ intensity profiles.



Proven Results



Accurately count Live (AO) versus Dead (PI) cells.

- Determine cell viability, for cell lines or primary samples, using AO/PI in seconds
- Accurately measure cell samples with varying viability (0 - 100%)

User-Changeable Fluorescence Optics Modules*

Cellometer assays use specific optic modules for maximum performance and discrimination between fluorescence channels. Example filter modules are listed below. Additional filter modules available upon request. Please check our website for the most recent modules available.

Optics Module	Fluorophores	Nucleic Acid Stains
S1-534-470 Ex: 470nm (452-498nm) Em: 534nm (510-560nm)	GFP	AO (acridine orange)
	Calcein	SYTO [®] 9, SYTO [®] 13
	FITC	SYTOX [®] Green
	AlexaFluor [®] 488	SYTO [®] BC
S1-605-527 Ex: 527nm (498-550nm) Em: 605nm (570-638nm)	AlexaFluor [®] 546	PI (propidium iodide)
	AlexaFluor [®] 555	EB (ethidium bromide)
	Cy3 [®]	SYTOX [®] Orange
	PE (R-phycoerythrin)	
	RFP	
S1-655-527 Ex: 527nm (525-558nm) Em: 655nm (642-665nm)	RFP	PI (propidium iodide)
	7-AAD	EB (ethidium bromide)
	Nile Red	

*This table is a partial list of compatible fluorophores, nucleic acid stains, and fluorescent proteins. Please contact Nexcelom technical support regarding compatibility of other reagents.

Sytox, AlexaFluor, and Cy are trademarks of Life Technologies.

Which Instrument is Right for Me?												
Features	Bright Field Cell Counters			Fluorescent Viability Cell Counters				Image Cytometers				
	Mini	Auto T4	Auto 1000	Auto 2000	X1	X2	K2	Spectrum	Spectrum (10x)	Celigo BF	Celigo 4 Channel	Celigo 5 Channel
Cell / Sample Type												
Cell Line	X	X	X	X			X	X		X	X	X
Cultured Primary Cells	X	X	X	X			X	X		X	X	X
Algae									X			
Platelets						X			X			
Low Concentration Cell Lines				X			X	X		X	X	X
Yeast (Clean Sample)					X	X			X			
Yeast (Messy Sample)						X			X			
Primary cells (Messy Sample*)				X			X	X			X	X
PBMCs, Splenocytes, Stem Cells				X			X	X			X	X
Hepatocytes							X	X			X	X
Adipocytes**				X			X	X		X	X	X
Cell-Based Assay **					X	X	X	X	X	X	X	X
Apoptosis (Annexin V-FITC/PI)							X	X	X		X	X
Apoptosis (Caspase Activity)							X	X	X		X	X
Autophagy (Cytold-green)								X	X			
Cell Proliferation (CFSE)								X	X		X	X
Cell Cycle (PI)					X	X	X	X	X		X	X
GFP Transfection				X		X	X	X	X		X	X
RFP Transfection								X	X		X	X
Mitochondrial Potential (JC-1)								X	X		X	X
Multi-drug Resistance (ABC Transporter)								X	X		X	X
Surface Marker Analysis								X	X		X	X
Vitality (Calcein-AM/PI)						X	X	X	X		X	X
Vitality (CFDA-AM)						X			X			
Image Cytometry**								X	X		X	X

* A messy sample is a heterogeneous sample containing unwanted cell types, such as red blood cells, in addition to the cells of interest.

** FCS Express license must be purchased in order to perform Cell Based Assay or Image Cytometry analysis

*** Cellometer CHT4-PD300 slides are required for cells greater than 80µm in diameter

Innovation and Expertise in the Science of Cell Counting

Schedule a FREE demonstration or technical seminar with a Nexcelom Applications Specialist today.

Call 978-327-5340 or
E-mail info@nexcelom.com

For Europe
Call 44 (0) 161 232 4593 or
E-mail info@nexcelom.co.uk

For China
Call +86 21 5886 0038 or
E-mail info@nexcelom.com



Qh{fharp #Elrv hqfh
693# huip dfn#vhhw#Exlg lj #
Odz uhqfh/# D #4;76/#VD