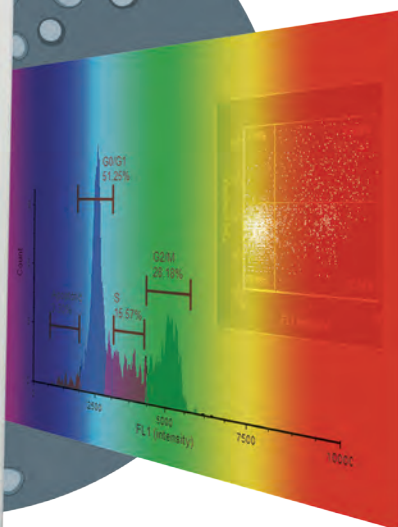


Cellometer[®] Vision CBA

Image Cytometry System
for 20µl Cell-Based Assays



Apoptosis
Autophagy
Cell Cycle
Proliferation
Transfection
Viability
and Others

Features of the Vision CBA Image Cytometry System

All-in-One System

Basic cell counting, primary cell viability, and cell-based assays.

Dual-Fluorescence for Accurate Primary Cell Viability

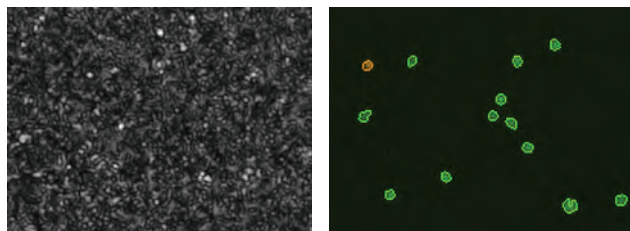
No interference from red blood cells. Analyze bone marrow, peripheral blood, and cord blood without lysing.

Unique Algorithms for Advanced Cell Analysis

Determine concentration and viability of hepatocytes, adipocytes, and other sophisticated cell types.

Fast Results

Obtain cell images, counts, size measurements, viability calculations, and population data in <3 minutes.



Bone Marrow Aspirate: bright field image and dual-fluorescence image showing live and dead nucleated cells present

Simple Cell-Based Assays

- Pre-qualified reagents
- Small 20µl sample size
- Simple, image-based analysis
- Pre-defined instrument settings
- Assay-specific data templates
- Accurate, consistent results



Advantages of Cellometer Image Cytometry

➤ Cell Imaging

- Visually check cell morphology
- Ensure only cells of interest are counted
- Archive and re-analyze cell images
- Export images for publication

➤ Proprietary Pattern-Recognition Software

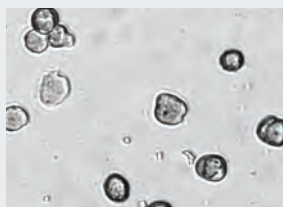
- Count individual cells in clusters
- Count irregular-shaped cells
- Count cells based on size
- Eliminate debris from cell counts

➤ Non-Fluidic Platform

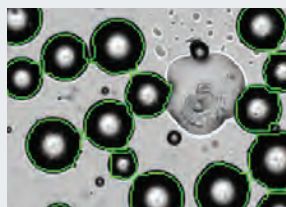
- Disposable counting chambers - no washing
- Compatible with fragile cells
- Maintenance-free
- Robust optics modules and LED light sources

➤ IQ/OQ Validation and GMP/GLP Accessories

- Installation Qualification reagents/protocol
- Operational Qualification reagents/protocol
- On-site IQ or OQ Performance
- GMP/GLP Software Module



Primary Hepatocytes:
bright field image



Primary Adipocytes:
bright field counted image

“The Cellometer Vision CBA is by far the best product we have used in our lab. In such little time, this small machine can capture images, analyze data and upload your data into a neat PowerPoint that can be used immediately. We have used this machine for apoptosis assays and cell cycle assays and it has not disappointed!”

Cellometer Vision CBA Image Cytometry System for Cell-Based Assays

Vision CBA combines the simplicity of image cytometry with the power of flow analysis software to offer simple, accurate cell-based assays.

➔ Apoptosis Assays

Detect programmed cell death based on Annexin-V binding, Caspase activation, Chromatin condensation, or changes in mitochondrial membrane potential

➔ Aggresome Detection Assay

Detect inclusion body formation in response to the accumulation of aggregating proteins

➔ Autophagy Assay

Detect the breakdown of intra-cellular components by formation of autophagosomes and autolysosomes (special transport vesicles)

➔ Cell Cycle Assays

Determine population distribution by cell cycle phase based on DNA content: resting/growth phase (G0/G1), DNA replication phase (S), cell division phase (G2M)

➔ Multidrug Resistance (MDR) Assay

Detect multidrug resistance based on activity of ABC transporter proteins and the removal of compounds from the cell



➔ Proliferation Assays

Measure cell division based on reduction of original cytoplasmic protein content (and fluorescence intensity) in each generation

➔ Surface Marker Assays

Quantify specific cell populations based on surface marker expression (CD56+ NK cells, CD34+ stem cells, etc.)

➔ Transfection Assays

Determine the efficiency of transfection based on CFP, GFP, mCherry, RFP, TdTomato, or YFP expression

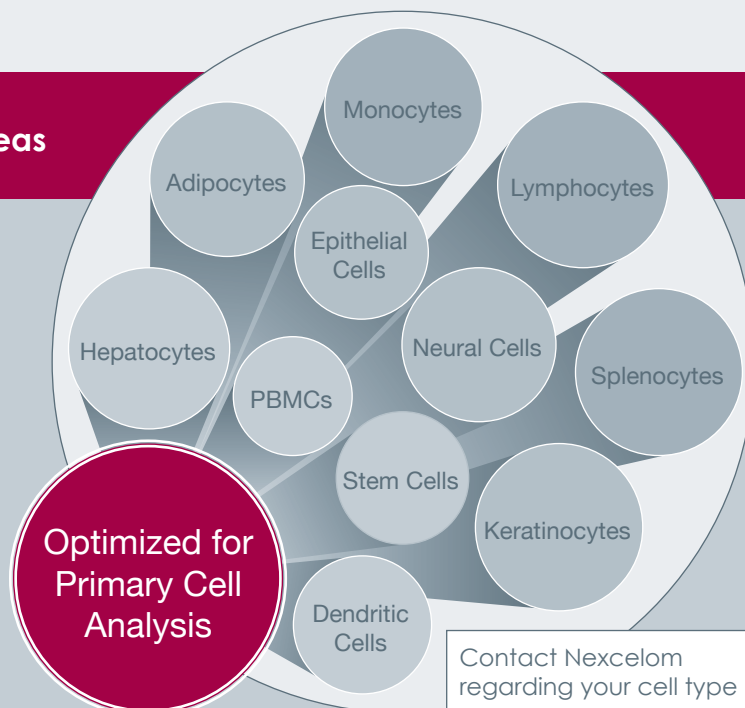
➔ Viability Assays

Measure the number, concentration, and percentage of live and dead cells based on membrane integrity and/or metabolic activity

Validated Cell Types for Many Research Areas



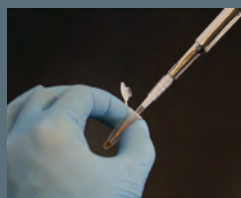
- **Clinical Immunology:** PBMCs
- **Diabetes / Obesity:** Adipocytes
- **Immunotherapy:** Leukocytes
- **Microbiology:** Yeast (Vision 10x)
- **Oncology:** Cell Lines
- **Regenerative Medicine:** Stem Cells
- **Toxicology:** Hepatocytes
- **Transplantation:** Nucleated Cells
- **Vaccine Development:** Splenocytes



Contact Nexcelom regarding your cell type

“ Our Cellometer Vision CBA allows us to easily and accurately perform cell based assays for our drug resistance experiments! ”

Validated Cell-Based Assay Kits

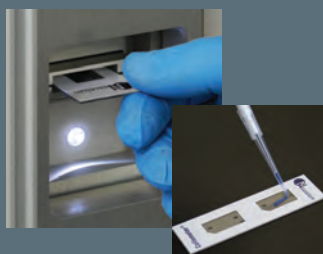


- Optimized reagent concentrations
- Simple staining procedures

1

User-friendly sample preparation

Non-Fluidic System



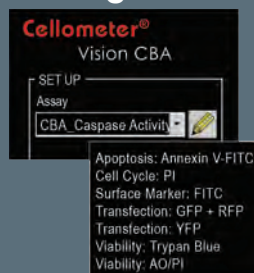
- No washing, clogging or daily calibration
- Pre-defined instrument settings

3

Simple, maintenance-free operation

Simple, 20µl Cell-Based Assays

Growing Menu of Optimized Assays

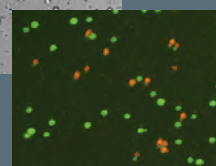
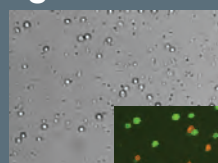


- Pre-set analysis parameters
- Automatic counting and data calculation

2

Consistent results

Bright Field and Fluorescent Cell Images



- Confirmation of counted cells
- Fluorescent cell counting

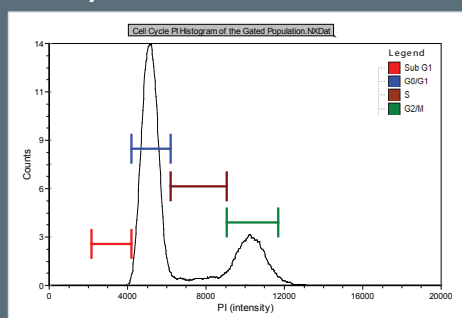
4

Accurate results

Export to FCS Express* for Flow-Like Data Output

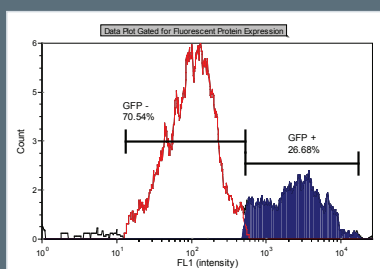
- Pre-set data layouts with user-adjustable gates
- Multi-sample analysis options

Cell Cycle: PI

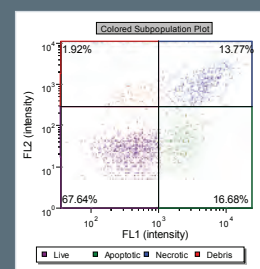


Cell Population	% of Gated Cells	CV	Concentration (10 ⁶ cells/mL)
Total	100		9.2
Sub G1	1.2	5.1	0.1
G0/G1	63.4	10.5	5.8
S	13.9	11.3	1.3
G2/M	21.0	8.2	1.9

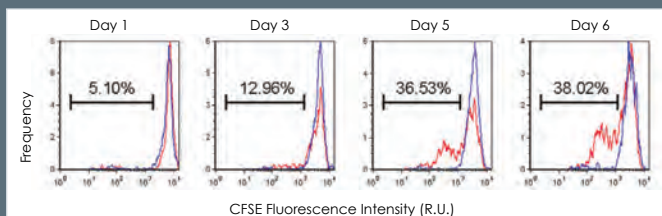
GFP Transfection



Apoptosis: Annexin V-FITC / PI



Cell Proliferation: CFSE



Proliferation time course involving B1 B cells. An increasing % of daughter cells exhibiting decreased fluorescence were observed on days 3, 5, and 6.

*FCS Express Flow Cytometry software is a product of De Novo Software.

Comprehensive data: images, graphs, tables

5

Proven Results

To demonstrate the Vision CBA Image Cytometry System for cell cycle analysis, Jurkat cells were incubated overnight with various concentrations of Nocodazole, a cell cycle-arresting drug. More than 40% of the cell population was arrested at the G2/M phase following incubation with 0.02 µg/mL Nocodazole. Cellometer Vision CBA results showed excellent correlation to results obtained with the LSRII flow cytometer.

Nocodazole Dose Response

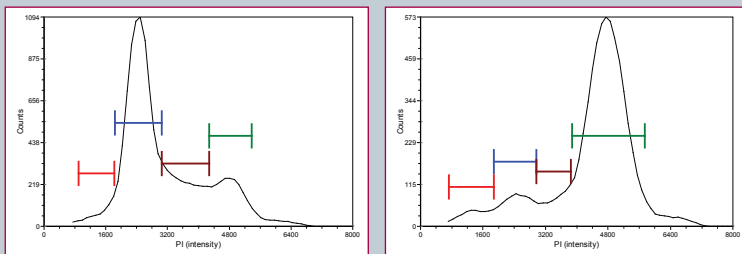


Figure 1. Cell cycle histogram following incubation with 0.004, and 0.1 µg/mL Nocodazole

Correlation to Flow

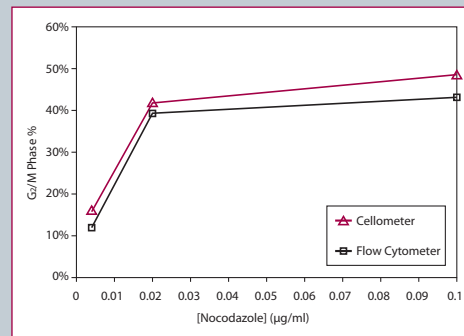


Figure 2. Percent of cells arrested at G2/M Phase

“The Cellometer Vision CBA has provided highly trustworthy and fast results using the powerful algorithms for automated image-based cell counts and flow-like analysis. Plus, there is no need to clean up the instrument and it is a very user-friendly interface. I highly recommend it!”

User-Changeable Fluorescence Optics Modules*

Individual Cellometer assays are designed to utilize specific optics modules for maximum performance and discrimination between fluorescence channels. Each Vision instrument accommodates two optics modules at one time. To change a module, users simply open the access panel at the rear of the instrument, depress the lever and remove the appropriate optics module, then insert the new one in its place. Standard modules are listed in the table below. Custom fluorescence optics modules are also available.



	Optics Module	Fluorophores	Nucleic Acid Stains	Fluorescent Proteins
Dapi	VB-450-302 Ex: 375 nm Em: 450 nm	AlexaFluor® 350	DAPI Hoechst 33342 Hoechst 33258	BFP CFP
Sytox Green	VB-535-402 Ex: 475 nm Em: 535 nm	Calcein FITC AlexaFluor® 488	AO (acridine orange, +DNA) SYTO®9, SYTO®13	GFP YFP
EB	VB-595-502 Ex: 525 nm Em: 595 nm	AlexaFluor® 546 AlexaFluor® 555, Cy3® PE (R-phycoerythrin) Rhodamine B	PI (propidium iodide) EB (ethidium bromide) SYTOX® Orange	Ds Red RFP TdTomato
PI	VB-660-502 Ex: 540 nm Em: 660 nm	AlexaFluor® 647 7-AAD Nile Red	PI (propidium iodide) EB (ethidium bromide) AO (acridine orange, +RNA)	
7-AAD	VB-695-602 Ex: 630 nm Em: 695 nm	AlexaFluor® 647, Cy5® APC (allophycocyanin)	SYTOX® Red	Crimson
Sytox Red				

*This table is a partial list of compatible fluorophores, nucleic acid stains, and fluorescent proteins. Please contact Nexcelom technical support regarding compatibility of other reagents.

Sytox, AlexaFluor, and Cy are trademarks of Life Technologies.

See for Yourself Why the Top Ten Pharmaceutical Companies Trust Cellometer

On-Site Demonstrations are a convenient way to evaluate the Vision CBA System. An experienced Applications Specialist will arrive at your lab for a hands-on session to test your cells and demonstrate the Vision CBA for your application.

Technical Seminars are an excellent way to introduce Cellometer systems to a lab group or collaborators in different laboratories within an organization. A trained biologist will discuss and demonstrate the capabilities and advantages of Cellometer image cytometry for cell viability and cell-based assays.

Schedule a FREE on-line demonstration, on-site demonstration or technical seminar with a Nexcelom Applications Specialist today.

Call 978-327-5340 or E-mail
info@nexcelom.com

Cellometer Cell Counters, Cell Analysis Systems & Image Cytometry
Nexcelom offers a wide range of Cellometer systems developed and optimized for specific applications and cell types.



For more information, visit
www.nexcelom.com

Contact us at:
Nexcelom Bioscience
360 Merrimack Street, Building 9
Lawrence, MA 01843, USA

Email: info@nexcelom.com
Phone: 978.327.5340
Fax: 978.327.5341



www.nexcelom.com/products

Cellometer® Simply Counted
Celigo® Image Cytometer

Which Instrument is Right for Me?

Features	Bright Field Cell Counters			Fluorescent Viability Cell Counters				Image Cytometers				
	Mini	Auto T4	Auto 1000	Auto 2000	X1	X2	K2	Vision CBA	Vision CBA (10x)	Celigo BF	Celigo 4 Channel	Celigo 5 Channel
Cell / Sample Type												
Cell Line	X	X	X	X			X	X		X	X	X
Cultured Primary Cells	X	X	X	X			X	X		X	X	X
Algae									X			
Platelets						X			X			
Low Concentration Cell Lines				X			X	X		X	X	X
Yeast (Clean Sample)					X	X			X			
Yeast (Messy Sample)						X			X			
Primary cells (Messy Sample*)				X			X	X			X	X
PBMCs, Splenocytes, Stem Cells				X			X	X			X	X
Hepatocytes							X	X			X	X
Adipocytes***				X			X	X		X	X	X
Cell-Based Assay **					X	X	X	X	X	X	X	X
Apoptosis (Annexin V-FITC/PI)							X	X	X		X	X
Apoptosis (Caspase Activity)							X	X	X		X	X
Autophagy (CytolD-green)								X	X			
Cell Proliferation (CFSE)								X	X		X	X
Cell Cycle (PI)					X	X	X	X	X		X	X
GFP Transfection				X		X	X	X	X		X	X
RFP Transfection								X	X		X	X
Mitochondrial Potential (JC-1)								X	X		X	X
Multi-drug Resistance (ABC Transporter)								X	X		X	X
Surface Marker Analysis								X	X		X	X
Vitality (Calcein-AM/PI)						X	X	X	X		X	X
Vitality (CFDA-AM)						X						
Image Cytometry**								X	X		X	X

* A messy sample is a heterogeneous sample containing unwanted cell types, such as red blood cells, in addition to the cells of interest.
** FCS Express license must be purchased in order to perform Cell Based Assay or Image Cytometry analysis
*** Cellometer CH14-PD300 slides are required for cells greater than 80µm in diameter

