

smiths medical
portex®



Echoglo® Peripheral Nerve Block Needle



Inspired engineering for enhanced illumination

ENGINEERED FOR ULTRASOUND

The Portex® EchoGlo® Peripheral Nerve Block Needle has been engineered for echogenic brightness at any angle or orientation – whether steep and deep, or shallow conditions – for quick, accurate delivery of medication.

ILLUMINATING DESIGN

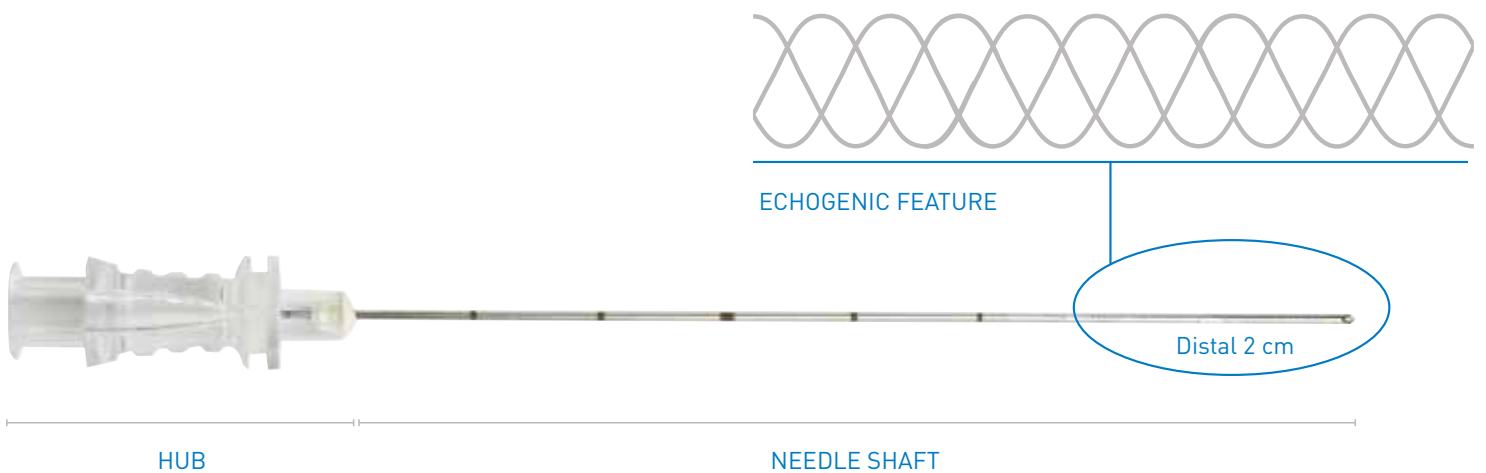
Echogenicity starts with the grooves, which appear on the distal 2 cm of the needle tip. The proprietary design is a combination of clockwise and counter-clockwise, spiral-wound grooves. Particle physics dictate that light will bounce off the grooves and communicate needle location via the ultrasound monitor. The 360° tip design allows light to reflect back to the transducer.

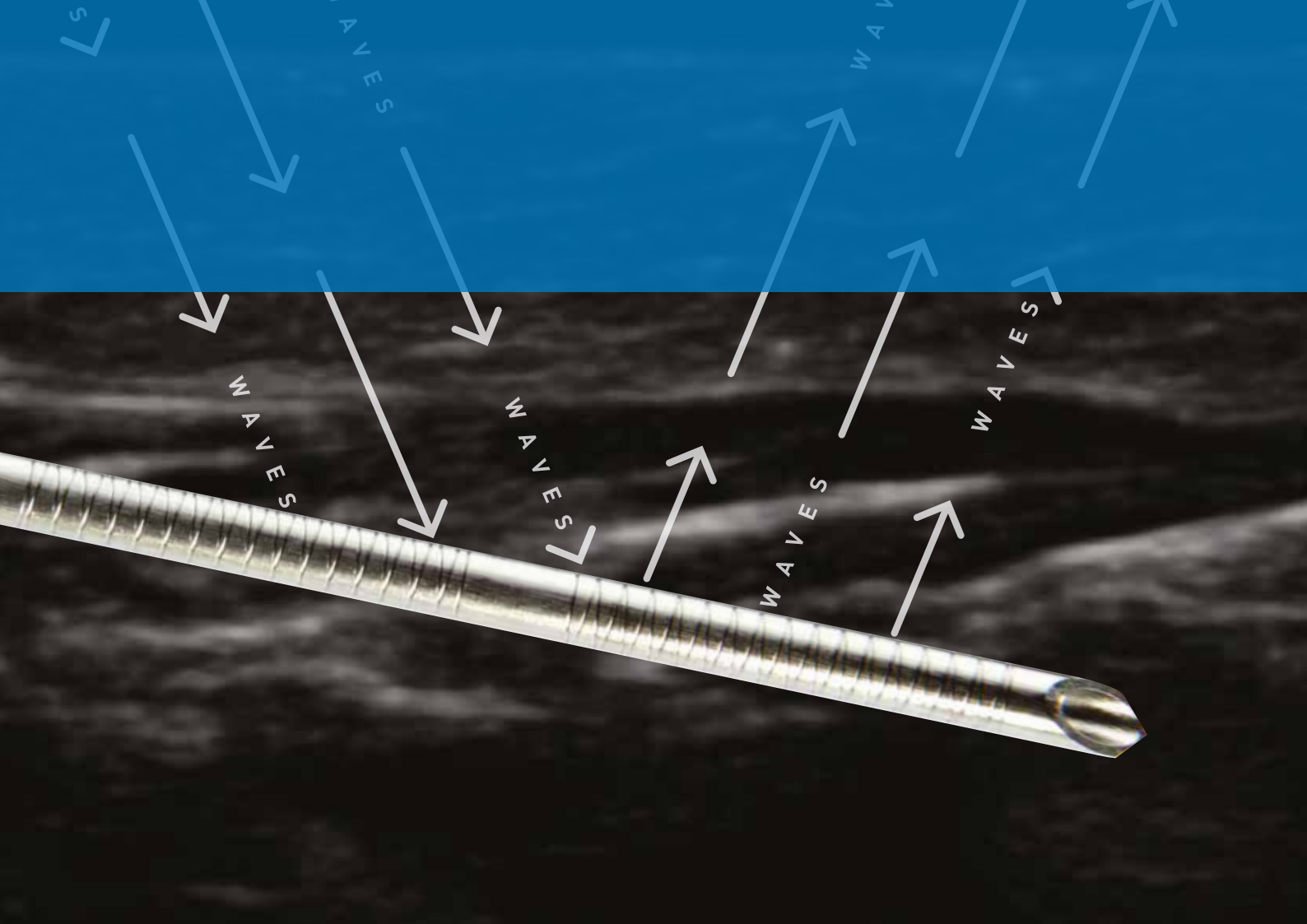
PITCH PERFECT

The EchoGlo® PNB needle groove incorporates a smaller pitch, resulting in an increased “feature density,” thereby creating more echogenicity than a regular needle.



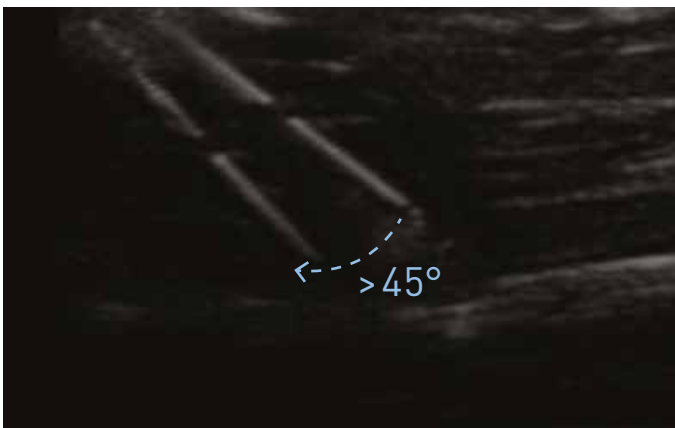
The anatomy of an echogenic needle





Echogenic at any angle

Product development focused not only on enhanced echogenics, but the ability to generate perpetual brightness so the needle's orientation – whether steep and deep, or shallow – allows clarity during procedures. The EchoGlo® needle creates an environment where practitioners can truly work in tandem with ultrasound.



STEEP & DEEP

The EchoGlo® Needle maintains brightness at angles $>45^\circ$, allowing practitioners to nimbly navigate the patient's unique neural and vascular landscape.



SHALLOW

Enhanced echogenicity allows for precise medicinal delivery, regardless of the location of the targeted nerve - no matter how shallow the conditions.

ORDERING INFORMATION



Product Number	Description	Per Box
24-4100-24	Single-shot nerve block needle, 22G x 35 mm (1 3/8 in.), 30° bevel, Luer	25
24-4101-24	Single-shot nerve block needle, 22G x 50 mm (2 in.), 30° bevel, Luer	25
24-4102-24	Single-shot nerve block needle, 22G x 80 mm (3 1/8 in.), 30° bevel, Luer	25
24-4103-24	Single-shot nerve block needle, 22G x 100 mm (4 in.), 30° bevel, Luer	25
24-4104-24	Single-shot nerve block needle, 21G x 100 mm (4 in.), 30° bevel, Luer	25
24-4105-24	Single-shot nerve block needle, 20G x 150 mm (6 in.), 30° bevel, Luer	25
24-4122-01*	Single-shot nerve block prep tray with drugs	10

*Available in the U.S. only

To get started, contact your local Smiths Medical representative
or call Customer Service at 1-800-258-5361.

PRODUCT(S) DESCRIBED MAY NOT BE LICENSED OR AVAILABLE FOR SALE IN CANADA AND OTHER COUNTRIES

Smiths Medical ASD, Inc.
6000 Nathan Lane North
Minneapolis, MN 55442, USA
Tel: 1-614-210-7300
Toll-Free USA: 1-800-258-5361
www.smiths-medical.com

MPAUC-1725

Rx
ONLY **CE**
2797

smiths medical

Find your local contact information at: www.smiths-medical.com/customer-support

Smiths Medical is part of the global technology business Smiths Group plc. Please see the Instructions for Use/Operator's Manual for a complete listing of the indications, contraindications, warnings and precautions. EchoGlo, Portex and the Smiths Medical design mark are trademarks of Smiths Medical. The symbol ® indicates the trademark is registered in the U.S. Patent and Trademark Office and certain other countries. All other names and marks mentioned are the trademarks or service marks of their respective owners.
©2019 Smiths Medical. All rights reserved. RA1946606B-102019