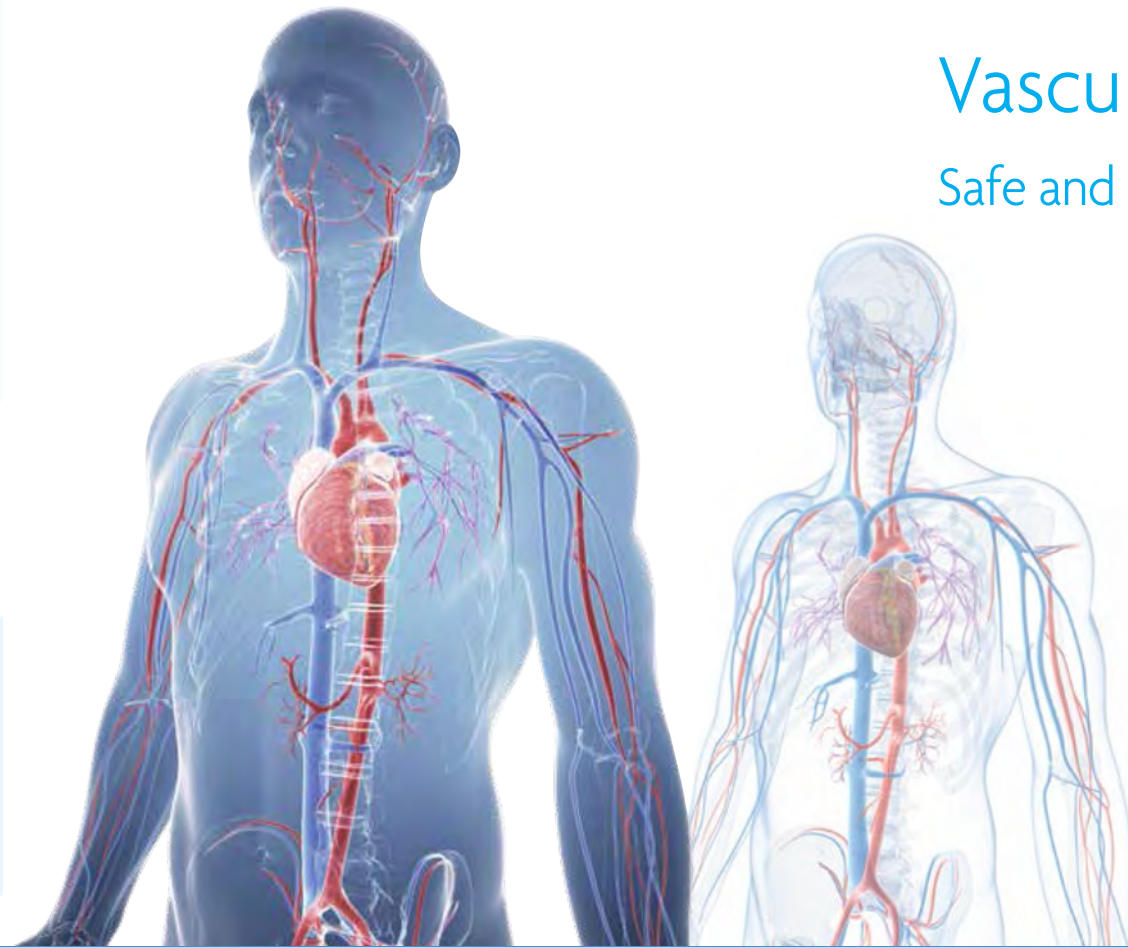


Vascular Access

Safe and secure



Specialised Solutions
for Vascular Access

Plan1Health

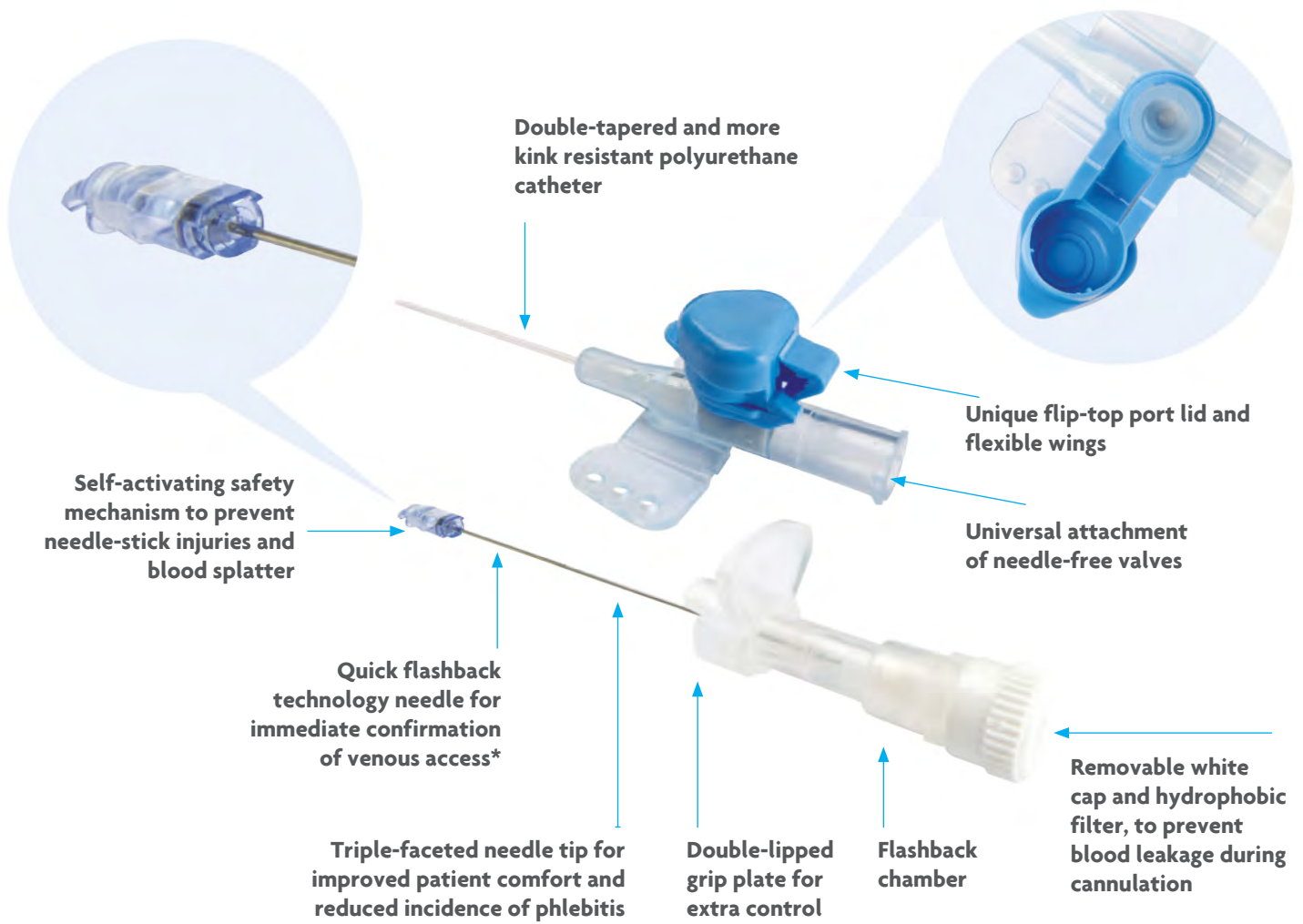
A Poly Medisure Group Company

POLYMED
MEDICAL DEVICES
We Care As We Cure

PART OF **DCC**  **ITAL**
PHARMA DEVICES LOGISTICS

SentraFlex IV Safety Cannula

PERIPHERAL SAFETY I.V. CANNULA



*ADVA – Quick flashback technology needles available in 18G, 20G, 22G, 24G, 26G

Product code	Size	Catheter ID/OD (mm)	Catheter length (mm)	Flow rate (ml/min)	NHS Supply Chain code
A/1101/14/P	14G	1.7/2.1	45	305	FSP5044
A/1101/16/P	16G	1.3/1.7	45	200	FSP5049
A/1101/18/P	18G	0.9/1.3	45/32	95	FSN85071
A/1101/20/P	20G	0.8/1.1	32	65	FSN85073
A/1101/22/P	22G	0.6/0.9	25	36	FSN85072
A/1101/24/P	24G	0.5/0.7	19	23	FSN85070
A/1101/26/F	26G	0.45/0.6	19	17	FSP5050

SentraCath Blood Control IV Safety Cannula



Use of peripheral intravenous cannula (PIVC) places healthcare workers at risk of exposure to blood and possible transmission of a number of pathogens, including hepatitis B, C and HIV. Accidental blood exposure may occur through needle stick injuries (NSIs), catheter leakage, back flow at the catheter hub or splatter that originates when needle safety mechanisms are activated during PIVC insertion.

Blood control safety IVCs help in reducing such blood leakage and blood exposure events, leading to reduction in the risk of occupational blood-borne illness exposure to healthcare professionals.



- Reduces the risk of blood exposure and contamination



- Prevention of accidental needle stick injuries



- Bio-compatibility and longer indwelling time



- Provides clean access site

- Injection port with unidirectional valve facilitates supplemental medication



- Silicone septum prevents blood spillage



- User-friendly, self-activating safety mechanism prevents needle stick injuries

- Quick flashback needle technology ensures successful venipuncture

Size	Product code	Catheter OD (mm)	Flow rate (mL/min)	Maximum power injectable flow rate (mL/min)	Units per box	NHSSC code
18G Green	SML/1850/18/P	1.3	65	10	50	
18G Green	SML/1854/18/32	1.3	70	10	50	
20G Pink	SML/1851/20/P	1.1	47	7	50	
22G Blue	SML/1852/22/P	0.9	28	6	50	
24G Yellow	SML/1853/24/P	0.7	17	4	50	
18G Green	SML/1812/18/P	1.3	65	10	50	FSP85103
18G Green	SML/1813/18/P	1.3	70	10	50	FSP85116
20G Pink	SML/1814/20/P	1.1	47	7	50	FSP85102
22G Blue	SML/1815/22/P	0.9	28	6	50	FSP85114
24G Yellow	SML/1816/24/P	0.7	17	4	50	FSP85098

SentraCath Closed System IV Safety Cannula



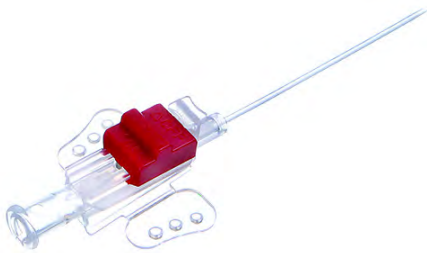
Integrated closed system to minimise CRBSIs and ensure safety for healthcare professionals from blood borne pathogen exposure

Product group	Product code	Colour	Product description	Units per box	NHSSC code
Y site	SML/1923/18/P	18G	SentraCath closed system IV safety cannula with extension, wings, Y site, 32mm, 18G	20	FSP85100
	SML/1924/20/P	20G	SentraCath closed system IV safety cannula with extension, wings, Y site, 32mm, 20G	20	FSP85097
	SML/1925/22/P	22G	SentraCath closed system IV safety cannula with extension, wings, Y site, 25mm, 22G	20	FSP85111
	SML/1926/24/P	24G	SentraCath closed system IV safety cannula with extension, wings, Y site, 19mm, 24G	20	FSP85119
	SML/1927/26/P	26G	SentraCath closed system IV safety cannula with extension, wings, Y site, 19mm, 26G	20	FSP85108
Straight	SML/1931/18/P	18G	SentraCath closed system IV safety cannula with extension, wings, straight, 32mm, 18G	20	FSP85127
	SML/1955/18/P	18G	SentraCath closed system IV safety cannula with extension, wings, straight, 45mm, 18G	20	FSP85117
	SML/1932/20/P	20G	SentraCath closed system IV safety cannula with extension, wings, straight, 32mm, 20G	20	FSP85125
	SML/1933/22/P	22G	SentraCath closed system IV safety cannula with extension, wings, straight, 25mm, 22G	20	FSP85126
	SML/1934/24/P	24G	SentraCath closed system IV safety cannula with extension, wings, straight, 19mm, 24G	20	FSP85107
	SML/1935/26/P	26G	SentraCath closed system IV safety cannula with extension, wings, straight, 19mm, 26G	20	FSP85124
Y Site, needle-free	SML/1989/18/P	18G	SentraCath closed system IV safety cannula with extension, wings, Y site, needle-free valve, 32mm, 18G	20	FSP85112
	SML/1990/18/P	18G	SentraCath closed system IV safety cannula with extension, wings, Y site, needle-free valve, 45mm, 18G	20	FSP85110
	SML/1991/20/P	20G	SentraCath closed system IV safety cannula with extension, wings, Y site, needle-free valve, 32mm, 20G	20	FSP85109
	SML/1992/22/P	22G	SentraCath closed system IV safety cannula with extension, wings, Y site, needle-free valve, 25mm, 22G	20	FSP85129
	SML/1993/24/P	24G	SentraCath closed system IV safety cannula with extension, wings, Y site, needle-free valve, 19mm, 24G	20	FSP85128
Y site, 2 needle-free valves	SML/1994/26/P	26G	SentraCath closed system IV safety cannula with extension, wings, Y site, needle-free valve, 19mm, 26G	20	FSP5032
	SML/1980/16/P	16G	SentraCath closed system IV safety cannula with extension, wings, Y site, two needle-free valves, 32mm, 16G	20	FSP85232
	SML/1981/18/P	18G	SentraCath closed system IV safety cannula with extension, wings, Y site, two needle-free valves, 32mm, 18G	20	FSP85105
	SML/1982/18/P	18G	SentraCath closed system IV safety cannula with extension, wings, Y site, two needle-free valves, 45mm, 18G	20	FSP85104
	SML/1983/20/P	20G	SentraCath closed system IV safety cannula with extension, wings, Y site, two needle-free valves, 32mm, 20G	20	FSP85115
	SML/1984/22/P	22G	SentraCath closed system IV safety cannula with extension, wings, Y site, two needle-free valves, 25mm, 22G	20	FSP85113
	SML/1985/24/P	24G	SentraCath closed system IV safety cannula with extension, wings, Y site, two needle-free valves, 19mm, 24G	20	FSP85101
SML/1986/26/P	26G	SentraCath closed system IV v cannula with extension, wings, Y site, two needle-free valves, 19mm, 26G	20	FSP85099	

ArtCan Arterial Safety Cannula



- Suitable for arterial pressure monitoring and serial arterial blood gas determinations
- Sharp atraumatic needle bevel for minimal patient discomfort
- Specially designed ON/OFF switch prevents backflow and exposure of blood to healthcare professionals, and provides patient safety against air embolism and contamination
- Needle safety guard automatically covers the sharp bevel, after withdrawal of needle from the hub, minimising the risk of needle stick injury
- Available with PUR catheter, 45mm
- Sizes: 20G & 22G
- Latex-free, non-DEHP and PVC-free



ON/OFF switch

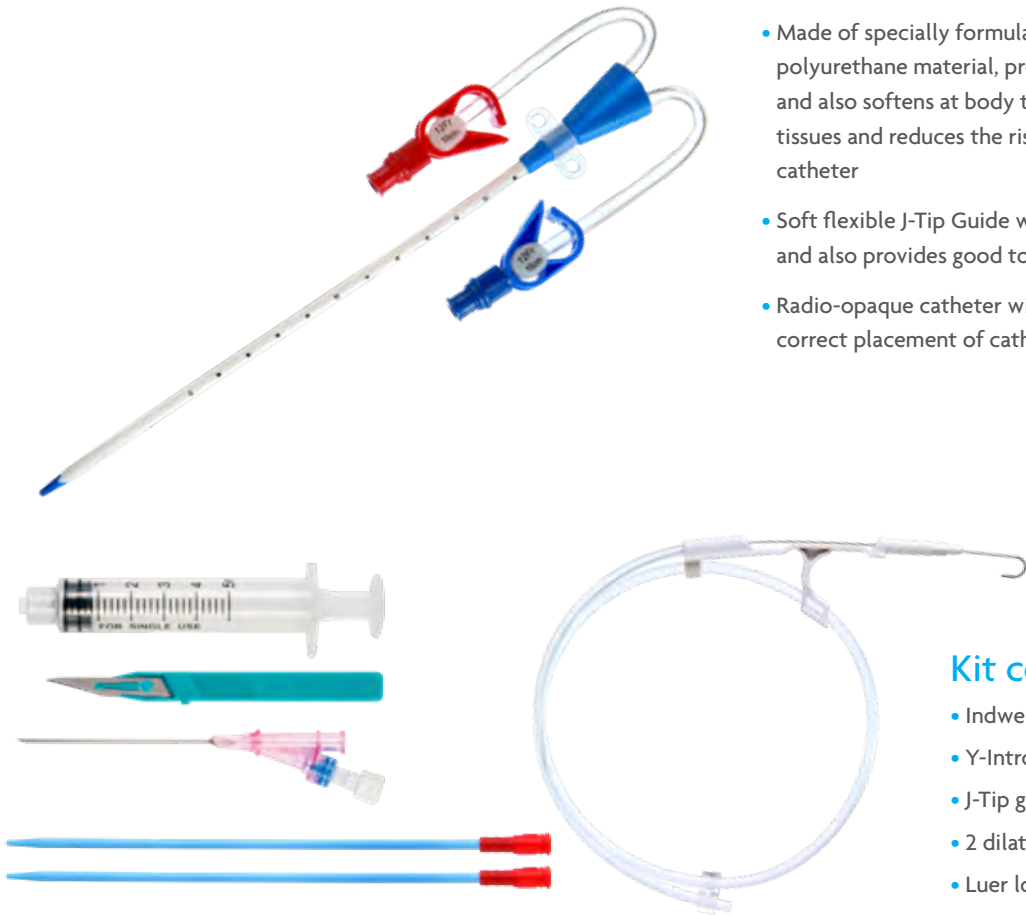


Needle safety guard

Product code	Product description	Size	Flow rate (mL/min)	Units per box	NHSSC code
13425	ArtCan Arterial Safety Cannula, PUR catheter	20G	49	25	FSP85890
13429	ArtCan Arterial Safety Cannula, PUR catheter	22G	28	25	FSQ3473

Haemodialysis catheter kit

- Made of specially formulated and bio-compatible polyurethane material, providing strength during insertion and also softens at body temperature to conform to the body tissues and reduces the risk of vascular trauma insertion of catheter
- Soft flexible J-Tip Guide wire prevents the vessel perforation and also provides good torque to ensure firm insertion
- Radio-opaque catheter with clear, defined marking facilitates correct placement of catheter tip



Kit contents

- Indwelling catheter
- Y-Introducer needle with valve
- J-Tip guide wire
- 2 dilators
- Luer lock syringe
- Scalpel



Haemodialysis Kit

Haemodialysis catheter kits

Description	Size	Length cm	Dilator OD	Guidewire diameter/length inch x cm
Triple Lumen	11.5Fr	13/16/20	12Fr and 10Fr	0.035 x 50
	12Fr	13/16/20	12Fr and 10Fr	0.035 x 50
Triple Lumen	12Fr	13/16/20	12Fr and 10Fr	0.035 x 50

Also available with Nitinol Guide Wire (HAEMOCENT PRO)



Over-the-needle

- The new mini midline kit over-the-needle is suitable for difficult insertion vascular access
- The kit contains a soft flexible kink resistant, straight nitinol guide wire for conversion into an over-the-wire
- Made of specially formulated and biocompatible radio opaque polyurethane material providing strength during insertion
- Specially designed soft tip for smooth and easy insertion of catheter
- Needle-free connector (tube length 5cm) provides closed system

Size	Catheter ID/OD mm		Product code			Flow rate mL/min		
			Catheter length mm					
			60	70	80	60	70	80
14G Orange	1.7	2.0	13440	13441	13442	295	290	285
16G Grey	1.3	1.7	13443	13444	13445	190	185	180
17G White	1.1	1.5	13446	13447	13448	130	125	120
18G Green	0.9	1.3	13449	13530	13531	80	75	70

Compatible with Power injectors upto 325-330 PSI

Polylead-OTW



Over-the-wire

Radio-opaque PUR catheter with fixation wings to be used with Seldinger technique by introducer needle and straight guidewire

Kit consists of :

- Mini midline catheter
- Introducer needle
- Nitinol guidewire straight point (OD 0.018)
- Securement device
- Wound IV dressing
- Drape

Options available :

- Probe cover
- Gel for U.S. machine
- MicroClave® Clear

Fr	Size	Catheter length mm	Flow rate mL/min	Guidewire length mm	Introducer needle	Product code
4	18G	40	40	250	21Gx54mm	13535
4	18G	60	38	250	21Gx54mm	13536
4	18G	80	34	250	21Gx54mm	13537
4	18G	120	31	400	21Gx54mm	13538
3	20G	40	24	250	21Gx54mm	13539
3	20G	60	19	250	21Gx54mm	13580
3	20G	80	17	250	21Gx54mm	13581
3	20G	120	13	400	21Gx54mm	13582
2	22G	40	17	250	21Gx41mm	13583
2	22G	60	14	250	21Gx41mm	13584
2	22G	80	12	250	21Gx41mm	13585
2	22G	120	8	400	21Gx41mm	13586

Compatible with Power injectors upto 325-330 PSI

MicroCLAVE® is a registered trademark of ICU Medical, Inc.

Continuous development for continuous infusion

POWER

Stable, deep vein, peripheral access



NOT FOR VENOUS CENTRAL ACCESS

HEALTHMID leverages two decades of development and manufacturing

Features

1 Reverse Tapering

For an easy and safe implantation procedure; reducing risk of bleeding. Reverse tapering offers also an excellent resistance to kinking.



2 Complete introducer set

- HEALTHMID catheter
- No CVC label
- Dilator/introducer
- Micro introducer needle
- Straight nitinol guidewire
- Instruction for use
- MicroCLAVE® Clear
- Scalpel
- Paper ruler
- Grip-Lok®

3 Power injectable catheters

All catheter versions are power injectable maximum contrast medium flow rates are specified in the product code table below.

Max injector pressure: V300PSI

Max fluid density: 12cP

Pre-heating of contrast medium to 37°C is recommended

MicroCLAVE® is a registered trademark of ICU Medical, Inc.
Grip-Lok® is a registered trademark of TIDI Products, LLC.

Product code	Lumen	Size Fr	Catheter material	ID (mm)	OD (mm)	Length (mm)	Gravity flow rate (mL/min)	Max power flow rate (mL/sec)	Reverse taper diameter increase (Fr)	With stylet	Units per box
201.67.12.13	Single	3	PUR	0.69	1.15	250	8	2	4	No	5
201.67.12.14	Single	4	PUR	0.97	1.42	250	22	5	6	No	5
201.67.12.15	Single	5	PUR	1.19	1.7	250	39	7	7	No	5
201.67.12.24	Double	4	PUR	0.6	1.42	250	4	2	6	No	5
201.67.12.25	Double	5	PUR	0.8	1.8	250	10	5	7	No	5
201.67.22.13	Single	3	PUR	0.69	1.15	250	8	2	4	Yes	5
201.67.22.14	Single	4	PUR	0.97	1.42	250	22	5	6	Yes	5
201.67.22.15	Single	5	PUR	1.19	1.7	250	39	7	7	Yes	5
201.67.22.24	Double	4	PUR	0.6	1.42	250	4	2	6	Yes	5
201.67.22.25	Double	5	PUR	0.8	1.8	250	10	5	7	Yes	5
201.67.32.13	Single	3	PUR	0.69	1.15	200	8	2	4	No	5
201.67.32.14	Single	4	PUR	0.97	1.42	200	22	5	6	No	5
201.67.32.15	Single	5	PUR	1.19	1.7	200	39	7	7	No	5
201.67.32.24	Double	4	PUR	0.6	1.42	200	4	2	6	No	5
201.67.32.25	Double	5	PUR	0.8	1.8	200	10	5	7	No	5
201.67.42.13	Single	3	PUR	0.69	1.15	200	8	2	4	Yes	5
201.67.42.14	Single	4	PUR	0.97	1.42	200	22	5	6	Yes	5
201.67.42.15	Single	5	PUR	1.19	1.7	200	39	7	7	Yes	5
201.67.42.24	Double	4	PUR	0.6	1.42	200	4	2	6	Yes	5
201.67.42.25	Double	5	PUR	0.8	1.8	200	10	5	7	Yes	5

Indications

HEALTHMID is indicated to be a peripherally implanted access to the peripheral venous system for up to 29 days, permitting intravenous administration of fluids, medications, nutritional therapy and to withdraw blood samples. The catheter should be inserted into a deep vein of the upper arm and the tip of the catheter should lie in the upper basilic vein or axillary/subclavian vein.

HEALTHMID is inserted using the Seldinger technique.

HEALTHMID is not a central venous catheter.

Peripherally Inserted Central Catheters



A wide range of power injectable, Peripherally Inserted Central Catheters including introducer accessories, allowing a safe, ultrasound guided percutaneous insertion

Intended use

HealthPICC is indicated to be a periferally implanted access to the central venous system for short and long-term use, permitting the intravenous administration of fluids, medications, nutritional therapy and the withdrawal of blood samples.

All **HealthPICC** catheters are suitable for high flow rate injection of contrast media ('power injection').

Features

1 Power injectable catheters

All HEALTHPICC catheters are made of polyurethane and suitable for high pressure injections (max flow rate as reported in the table below)

2 Kit contents

- HEALTHPICC catheter marked every centimetre
- MicroCLAVE® neutral connector
- Stylet
- Grip-Lok® suture-less adhesive
- Stylet holder and T-connector
- Safety scalpel
- 21G echogenic needle
- Paper ruler
- Nitinol straight guidewire
- Instructions for use
- Dilator/introducer
- Patient implant card

3 ECG-compatible for catheter's tip correct placement

4 Peel-away Dilator/introducer



Product code	Lumen	Size Fr	Catheter material	Catheter length cm	Effective length mm	Max power flow rate mL/sec	Reverse taper diameter Fr	Inner diameter mm	Guidewire material	Guidewire length cm	Units per box
201.60.10.13	Single	3	PUR	450	450	2	4	1.15	nitinol	40	1
201.60.10.13L	Single	3	PUR	450	450	2	4	1.15	nitinol	80	1
201.60.10.14	Single	4	PUR	550	550	5	6	1.42	nitinol	40	1
201.60.10.14L	Single	4	PUR	550	550	5	6	1.42	nitinol	80	1
201.60.10.15	Single	5	PUR	550	550	7	7	1.7	nitinol	40	1
201.60.10.15L	Single	5	PUR	550	550	7	7	1.7	nitinol	80	1
201.60.10.24	Double	4	PUR	450	450	2	6	1.42	nitinol	40	1
201.60.10.24L	Double	4	PUR	450	450	2	6	1.42	nitinol	80	1
201.60.10.25	Double	5	PUR	500	500	5	7	1.8	nitinol	40	1
201.60.10.25L	Double	5	PUR	500	500	5	7	1.8	nitinol	80	1
201.60.10.36	Triple	6	PUR	550	550	5 *	7	1.98	nitinol	40	1
201.60.10.36L	Triple	6	PUR	550	550	5 *	7	1.98	nitinol	80	1

(a) Gravity infusion from a height difference of 1m

(b) Maximum flow rate with limiting pressure of 300 PSI, medium viscosity of 12cP

(c) Only one lumen is power injectable for the 6Fr catheter

MicroCLAVE® is a registered trademark of ICU Medical, Inc.

Grip-Lok® is a registered trademark of TIDI Products, LLC.

It is now possible to combine the advantages of a total implantable subcutaneous chamber (PORT) with PICC's catheter introduction and placement technique with echo-guided venipuncture.

The catheter is introduced and placed using PICC's implant technique using echo-guided venipuncture, micro introducer set and ECG tip control. The catheter is then connected to a small PORT chamber, placed in a subcutaneous pocket in the middle third of the arm.

Main indications:

- 6-12 months chemotherapies
- Anatomical hindrances to traditional ports (prosthesis, burns, tracheostomies, etc.)
- Aesthetic concerns

Main PICC-PORT advantages:

- Exit-site absence
- Reduced risk of infections compared to PICC
- Reduced maintenance
- Reduced chamber visibility
- Less invasiveness and less patient perception



Features

Chamber		Septum	
Material :	titanium	Material :	silicone
Shape and dimensions :	wedged - base 21 mm x 16 mm	Diameter available for puncture :	9 mm
Height:	8.6 mm	Maximum number of punctures :	1500 with 22G Huber needle
Weight :	6 g		
Internal volume :	0.2 mL		

Catheter with rounded tip, marked with a dot every centimetre and a number every 5 centimetres

Product code	Product description mini MAX	Height mm	Weight g	Catheter Material	ID mm	OD mm	Size Fr	Length mm	Introducer size Fr	Flow rate mL/min 22G	Flow rate mL/min 19G
201.16.12.55	All-in-One	8.6	6	PUR	1.10	1.70	5	780	5	8	1

- Port chamber
- Catheter
- Connector
- 22G x 25.4 mm Huber needle
- Luer connector
- Straight nitinol guidewire
- 21G echogenic needle
- Dilator/introducer
- Stainless steel tunneller

For chemotherapy, analgesic therapy, antibiotic therapy and other solutions, injections and infusions of blood components and derivatives, repetitive drawing of blood samples.

SAFE

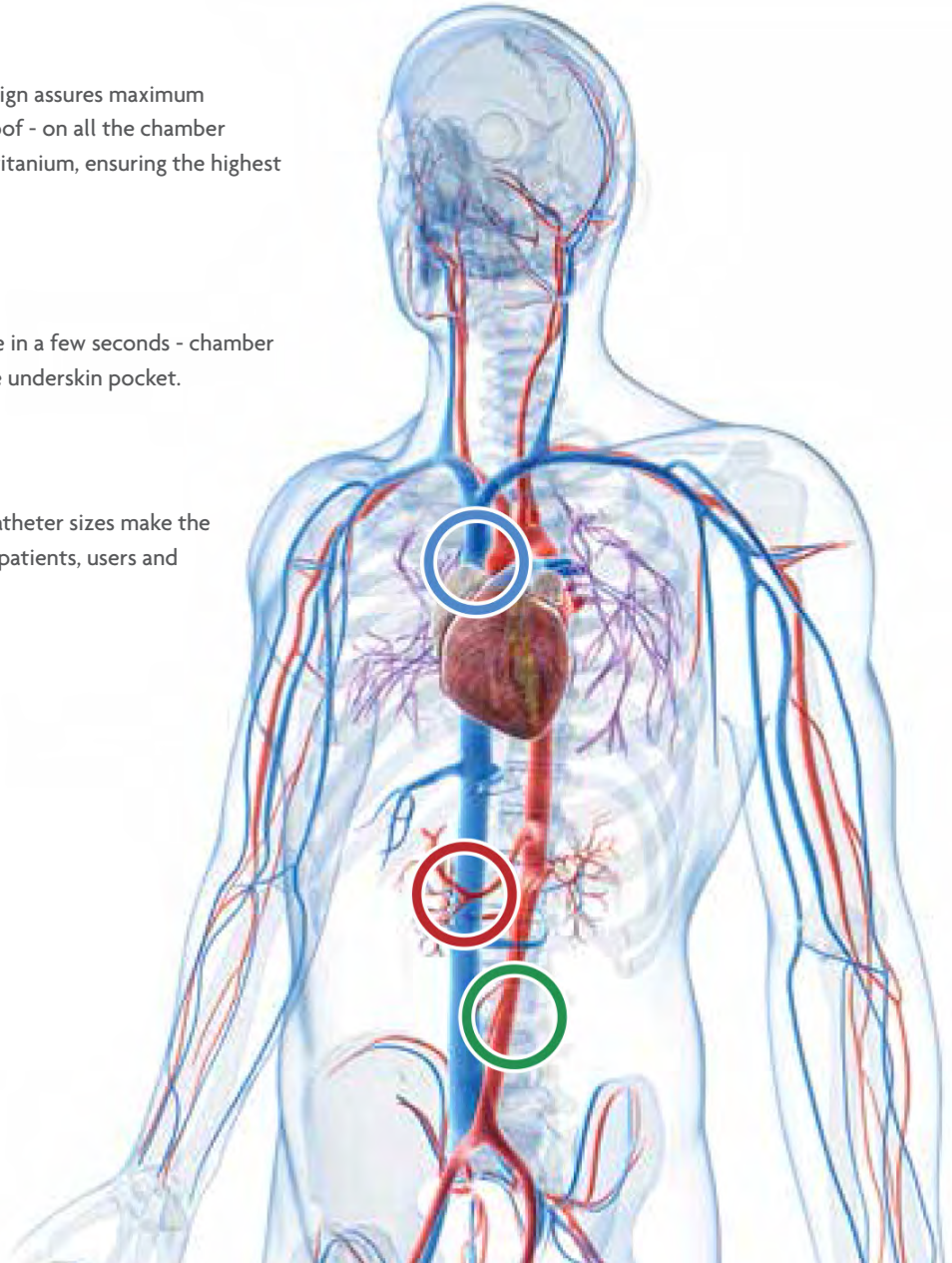
High quality materials and accurate design assures maximum reliability. Robust chambers are leakproof - on all the chamber models, the inner reservoir is made of titanium, ensuring the highest durability and drug compatibility.

SIMPLE

Catheter connection can easily be done in a few seconds - chamber shapes allow easy introduction into the underskin pocket.

VERSATILE

Wide choice of chamber models and catheter sizes make the **Healthport system** appropriate for all patients, users and clinical requirements.



	ETI LP	PLP	POWER TI	POWER PLP	miniMAX	FOCUS DC
VENOUS SYSTEM	●	●	●	●	●	●
SPINaL SYSTEM	●					
ARTERIAL SYSTEM		●				



- Small chamber
- Wedge-shaped for easy insertion into underskin pocket
- Large self-sealing septum facilitates location during skin palpation and reduces risks of puncture concentration
- High needle retention due to pressure exerted on self-sealing septum by titanium components
- Titanium assures highest mechanical reliability and stability

Features

Chamber

Material :	Titanium
Shape and dimensions :	wedged - base 27.5 mm x 19 mm
Height:	10.5 mm
Weight :	10.5 g
Internal volume :	0.53 mL

Septum

Material :	Silicone
Diameter available for puncture :	wedged - base 27.5 mm x 19 mm
Maximum number of punctures :	2000 with 22G Huber needle 1000 with 19G Huber needle

Product code	Product description ETI	Height mm	Weight g	Catheter material	ID mm	OD mm	Size Fr	Length mm	Introducer size Fr	Flow rate mL/min 22G	Flow rate mL/min 19G
201.17.12.21	All-in-One	10.5	10.5	silicone	1.0	2.1	6.5	780	6.5	7	13
201.17.12.31	All-in-One	10.5	10.5	silicone	1.5	2.7	8	780	9	10	18
201.17.12.41	All-in-One	10.5	10.5	PUR	1.1	1.7	5	780	5	8	13
201.17.10.21	Standard	10.5	10.5	silicone	1.0	2.1	6.5	780	n/a	7	13
201.17.10.31	Standard	10.5	10.5	silicone	1.5	2.7	8	780	n/a	10	18
201.17.10.41	Standard	10.5	10.5	PUR	1.1	1.7	5	780	n/a	8	13

All-in-one

- Port chamber
- Catheter
- Connector
- Huber needle 22G x 25.4 mm
- Luer connector
- Peel-away dilator-introducer
- 18G introducer needle
- 0.89 mm J-Guidewire
- Stainless steel tunneller

Standard

- Port chamber
- Catheter
- Connector
- Huber needle 22G x 25.4 mm
- Luer connector

Venous introducer set

Product code

201.51.10.21	Introducer set 6.5Fr
201.51.10.31	Introducer set 9Fr
201.51.10.41	Introducer set 5Fr

- Peel-away dilator-introducer
- 18G introducer needle
- 0.89 mm J-Guidewire
- Stainless steel tunneller



- Small chamber
- Circular (dome) shape for maximum stability of the chamber - risk of 'flipping' minimised
- Large self-sealing septum facilitates location during skin palpation and reduces risks of puncture concentration
- High needle retention due to pressure exerted on self-sealing septum by titanium components
- Titanium assures highest mechanical reliability and stability

Features

Chamber	
Material :	titanium
Shape and dimensions :	circular - base diameter 26 mm
Height:	10.2 mm
Weight :	8.5 g
Internal volume :	0.53 mL

Septum	
Material :	silicone
Diameter available for puncture :	12.8 mm
Maximum number of punctures :	2000 with 22G Huber needle 1000 with 19G Huber needle

Catheter with rounded tip, marked with a dot every centimetre and a number every 5 centimetres

All-in-one

Product code	Catheter description LP	ID mm	OD mm	Size Fr	Length mm	Volume mL
201.15.12.21	Silicone	1.0	2.1	6.5	780	0.61
201.15.12.31	Silicone	1.5	2.7	8	780	1.37
201.15.12.41	Polyurethane	1.1	1.7	5	780	0.74

- Port chamber
- Catheter
- Connector
- Huber needle 22G x 25.4 mm
- Luer connector
- Peel-away dilator-introducer
- 18G introducer needle
- 0.89 mm J-Guidewire
- Stainless steel tunneller

Standard

Product code	Catheter description LP	ID mm	OD mm	Size Fr	Length mm	Volume mL
201.15.10.21	Silicone	1.0	2.1	6.5	780	0.61
201.15.10.31	Silicone	1.5	2.7	8	780	1.37
201.15.10.41	Polyurethane	1.1	1.7	5	780	0.74

- Port chamber
- Catheter
- Connector
- Huber needle 22G x 25.4 mm
- Luer connector

Venous introducer set

Product code	
201.51.10.21	Introducer set 6.5Fr
201.51.10.31	Introducer set 9Fr
201.51.10.41	Introducer set 5Fr

- Peel-away dilator-introducer
- 18G introducer needle
- 0.89 mm J-Guidewire
- Stainless steel tunneller



Features

- Low profile plastic chamber, also suitable for patients with thick subcutaneous fat layer
- Light weight and cost-effective
- Titanium internal chamber avoids damages induced by needle tip and avoids interactions between plastic and drugs
- Large self-sealing septum facilitates location during skin palpation and reduces risks of puncture concentration
- Transparent and radiopaque elastomeric connector allows rapid, safe and reversible connection of the catheter

Chamber	
Material :	titanium + polysulphone
Shape and dimensions :	circular - base diameter 27 mm
Height:	10.6 mm
Weight :	5.9 g
Internal volume :	0.36 mL

Septum	
Material :	silicone
Diameter available for puncture :	13 mm
Maximum number of punctures :	2000 with 22G Huber needle 1000 with 19G Huber needle

Catheter with rounded tip, marked with a dot every centimetre and a number every 5 centimetres

All-in-one

Product code	Catheter description PLP	ID mm	OD mm	Size Fr	Length mm	Volume mL
201.22.12.21	Silicone	1.0	2.1	6.5	780	0.61
201.22.12.31	Silicone	1.5	2.7	8	780	1.37
201.22.12.41	Polyurethane	1.1	1.7	5	780	0.74
201.22.12.20	Polyurethane	1.3	2.0	6	600	0.63
201.22.12.33	Polyurethane	1.6	2.7	8	600	1.21

- Port chamber
- Catheter
- Connector
- Huber needle 22G x 25.4 mm
- Luer connector
- Peel-away dilator-introducer
- 18G introducer needle
- 0.89 mm J-Guidewire
- Stainless steel tunneller

Standard

Product code	Catheter description PLP	ID mm	OD mm	Size Fr	Length mm	Volume mL
201.22.10.21	Silicone	1.0	2.1	6.5	780	0.61
201.22.10.31	Silicone	1.5	2.7	8	780	1.37
201.22.10.41	Polyurethane	1.1	1.7	5	780	0.74

- Port chamber
- Catheter
- Connector
- Huber needle 22G x 25.4 mm
- Luer connector

Venous introducer set

Product code	
201.51.10.21	Introducer set 6.5Fr
201.51.10.31	Introducer set 9Fr
201.51.10.41	Introducer set 5Fr

- Peel-away dilator-introducer
- 18G introducer needle
- 0.89 mm J-Guidewire
- Stainless steel tunneller



- Chamber specifically designed to be used for highflow Injections of contrast media
- Large self-sealing septum facilitates location during skin palpation and reduces risks of puncture concentration
- Transparent and radiopaque elastomeric connector allows rapid, safe and reversible connection of the catheter
- Low profile plastic chamber, also suitable for patients with thick subcutaneous fat layer

Features

Chamber	
Material :	titanium + polysulphone
Shape and dimensions :	circular - base diameter 27 mm
Height:	10.6 mm
Weight :	5.9 g
Internal volume :	0.36 mL

Septum	
Material :	silicone
Diameter available for puncture :	13 mm
Maximum number of punctures :	2000 with 22G Huber needle 1000 with 19G Huber needle

Max Flow Rate = 5 mL/s with max pressure 300 PSI
Max Viscosity 12 cP

Product code	Product description POWER PLP	Height mm	Weight g	Catheter material	ID mm	OD mm	Size Fr	Length mm	Introducer Size Fr	Flow rate mL/min 22G	Flow rate mL/min 19G
201.24.12.30	All-in-One	10.6	5.9	silicone	1.30	2.70	8	600	9	7	21
201.24.12.20	All-in-One	10.6	5.9	PUR	1.35	2.00	6	600	6.5	8	22
201.24.12.33	All-in-One	10.6	5.9	PUR	1.60	2.70	8	600	9	8	24
201.24.10.30	Standard	10.6	5.9	silicone	1.30	2.70	8	600	n/a	7	21
201.24.10.20	Standard	10.6	5.9	PUR	1.35	2.00	6	600	n/a	8	22
201.24.10.33	Standard	10.6	5.9	PUR	1.60	2.70	8	600	n/a	8	24

All-in-one

- Port chamber
- Catheter
- Connector
- Huber needle 22G x 25.4 mm
- Luer connector
- Peel-away dilator-introducer
- 18G introducer needle
- 0.89 mm J-Guidewire
- Stainless steel tunneller

Standard

- Port chamber
- Catheter
- Connector
- Huber needle 22G x 25.4 mm
- Luer connector

Venous introducer set

Product code	
201.51.10.21	Introducer set 6.5Fr
201.51.10.31	Introducer set 9Fr

- Peel-away dilator-introducer
- 18G introducer needle
- 0.89 mm J-Guidewire
- Stainless steel tunneller



- Extra small chamber
- Wedge-shaped for easy insertion into underskin pocket
- Large self-sealing septum surface (in relation to overall dimensions)
- Suitable for patients with 'cosmetic' needs or paediatric patients
- High needle retention due to pressure exerted on self-sealing septum by titanium components
- Titanium assures highest mechanical reliability and stability

Features

Chamber		Septum	
Material :	titanium	Material :	silicone
Shape and dimensions :	wedged - base 21 mm x 16 mm	Diameter available for puncture :	9 mm
Height:	8.6 mm	Maximum number of punctures :	1500 with 22G Huber needle
Weight :	6 g		
Internal volume :	0.2 mL		

Catheter with rounded tip, marked with a dot every centimetre and a number every 5 centimetres.

Product code	Product description miniMAX	Height mm	Weight g	Catheter material	ID mm	OD mm	Size Fr	Length mm	Introducer size Fr	Flow rate mL/min 22G
201.16.12.21	All-in-One	8.6	6	silicone	1.00	2.10	6.5	780	6.5	7
201.16.12.55	All-in-One	8.6	6	PUR	1.10	1.70	5	780	5	8
201.16.10.21	Standard	10.2	8.5	silicone	1.00	2.10	6.5	780	n/a	7
201.16.10.41	Standard	10.2	8.5	PUR	1.10	1.70	5	780	n/a	8

All-in-one

- Port chamber
- Catheter
- Connector
- Huber needle 22G x 25.4 mm
- Luer connector
- Peel-away dilator-introducer
- 18G introducer needle
- 0.89 mm J-Guidewire
- Stainless steel tunneller

Standard

- Port chamber
- Catheter
- Connector
- Huber needle 22G x 25.4 mm
- Luer connector

Venous introducer set

Product code	
201.51.10.21	Introducer set 6.5Fr
201.51.10.41	Introducer set 5Fr

- Peel-away dilator-introducer
- 18G introducer needle
- 0.89 mm J-Guidewire
- Stainless steel tunneller



- Chamber specifically designed to be used for high flow injections of contrast media
- Large self-sealing septum facilitates location during skin palpation and reduces risks of puncture concentration
- Transparent and radiopaque elastomeric connector allows rapid, safe and reversible connection of the catheter
- Entire line (extension and huber needle) tested by independent laboratory

Features

Chamber

Material :	titanium + polysulphone
Shape and dimensions :	wedged - base 25 mm x 26.9 mm
Height:	13 mm
Weight :	12 g
Internal volume :	0.82 mL

Septum

Material :	silicone
Diameter available for puncture :	13 mm
Maximum number of punctures :	2000 with 22G Huber needle 1000 with 19G Huber needle

**Max Flow Rate = 5 mL/s with max Pressure 300 PSI,
Max Viscosity 12 cP**

Catheter material	Size Fr	OD mm	ID mm	Length mm	Flow rate* mL/min		Maximum flow rate mL/sec: limiting pressure 300 PSI, viscosity 12 cP**			Recommended maximum flow rate mL/sec	
					22G	19G	22G	20 G	19G	22G	20G - 19G
Polyurethane	6	2.00	1.35	600	8	22	3	6	7	2	5
Silicone	8	2.70	1.30	600	7	21	3	6	7	2	5
Polyurethane	8	2.70	1.60	600	8	24	3	7	7	2	5

* Gravity infusion from a height difference of 1 m, Huber needles of 22 and 19G respectively and catheter length of 450 mm

** Maximum flow rate with limiting pressure of 300 PSI, medium viscosity of 12 cP, catheter length of 450 mm and Huber needle length of 25.4 mm

Catheter with rounded tip, marked with a dot every centimetre and a number every 5 centimetres

All-in-one POWER TI

Product code	Catheter description POWER TI	ID mm	OD mm	Size Fr	Length mm	Volume mL
201.23.12.30	Silicone	1.3	2.7	8	600	0.61
201.23.12.20	Polyurethane	1.3	2.0	6	600	0.63
201.23.12.33	Polyurethane	1.6	2.7	8	600	1.21

Package Configuration

- Port chamber
- Catheter
- Connector
- Huber needle 22G x 25.4 mm
- Luer connector
- Peel-away dilator-introducer
- 18G introducer needle
- 0.89 mm J-Guidewire
- Stainless steel tunneller

Standard POWER TI

Product code	Catheter description POWER TI	ID mm	OD mm	Size Fr	Length mm	Volume mL
201.23.10.30	Silicone	1.3	2.7	8	600	0.61
201.23.10.20	Polyurethane	1.3	2.0	6	600	0.63
201.23.10.33	Polyurethane	1.6	2.7	8	600	1.21

- Port chamber
- Catheter
- Connector
- Huber needle 22G x 25.4 mm
- Luer connector

Venous introducer set

Product code

201.51.10.21	Introducer set 6.5Fr
201.51.10.31	Introducer set 9Fr

- Peel-away dilator-introducer
- 18G introducer needle
- 0.89 mm J-Guidewire
- Stainless steel tunneller



- Extra small chamber
- Wedge-shaped for easy insertion into underskin pocket
- Large self-sealing septum surface (in relation to overall dimensions)
- Suitable for patients with 'cosmetic' needs or paediatric patients
- High needle retention due to pressure exerted on self-sealing septum by titanium components
- Titanium assures highest mechanical reliability and stability

Features

Chamber		Septum	
Material :	titanium	Material :	silicone
Shape and dimensions :	wedged - base 21 mm x 16 mm	Diameter available for puncture :	9 mm
Height:	8.6 mm	Maximum number of punctures :	1500 with 22G Huber needle
Weight :	6 g		
Internal volume :	0.2 mL		

Catheter with rounded tip, marked with a dot every centimetre and a number every 5 centimetres.

Product code	Product description miniMAX	Height mm	Weight g	Catheter material	ID mm	OD mm	Size Fr	Length mm	Introducer size Fr	Flow rate mL/min 22G
201.16.12.21	All-in-One	8.6	6	silicone	1.00	2.10	6,5	780	6.5	7
201.16.12.55	All-in-One	8.6	6	PUR	1.10	1.70	5	780	5	8
201.16.10.21	Standard	10.2	8.5	silicone	1.00	2.10	6,5	780	n/a	7
201.16.10.41	Standard	10.2	8.5	PUR	1.10	1.70	5	780	n/a	8

All-in-one

- Port chamber
- Catheter
- Connector
- Huber needle 22G x 25.4 mm
- Luer connector
- Peel-away dilator-introducer
- 18G introducer needle
- 0.89 mm J-Guidewire
- Stainless steel tunneller

Standard

- Port chamber
- Catheter
- Connector
- Huber needle 22G x 25.4 mm
- Luer connector

Venous introducer set

Product code	
201.51.10.21	Introducer set 6.5Fr
201.51.10.41	Introducer set 5Fr

- Peel-away dilator-introducer
- 18G introducer needle
- 0.89 mm J-Guidewire
- Stainless steel tunneller



- Small chamber
- Wedge-shaped for easy insertion into underskin pocket
- Large self-sealing septum facilitates location during skin palpation and reduces risks of puncture concentration
- High needle retention due to pressure exerted on self-sealing septum by titanium components
- Titanium assures highest mechanical reliability and stability

Features

Chamber		Septum	
Material :	titanium	Material :	silicone
Shape and dimensions :	wedged - base 27,5 mm x 19 mm	Diameter available for puncture :	12.8 mm
Height:	10.5 mm	Maximum number of punctures :	2000 with 22G Huber needle 1000 with 19G Huber needle
Weight :	10.5 g		
Internal volume :	0.53 mL		

Product code	Chamber description ETI	ID mm	OD mm	Size Fr	Length mm	Volume mL
201.17.10.51	Silicone	1.0	2.1	6.5	780	0.61

- Port chamber
- Catheter
- Connector
- Huber needle 22G x 25.4 mm
- Luer connector



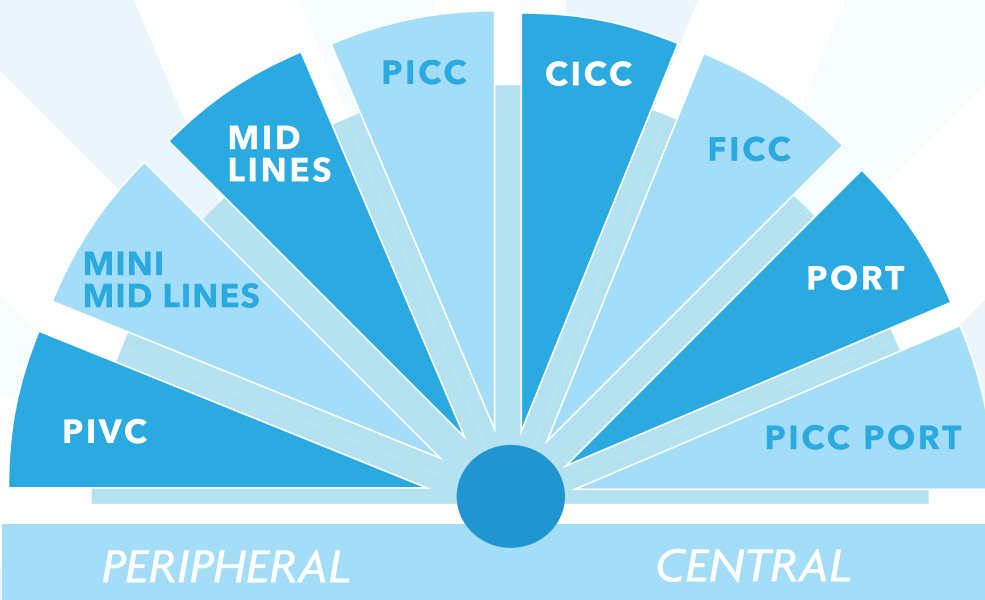
- Compatible with chemotherapeutic ports
- Non-coring needle maximises port septum life
- Safety mechanism for protection from needle stick injuries
- 190mm power injectable extension tubing
- 15mm, 20mm, 25mm & 32mm needle length options
- Soft wings for ease of dressing and handling
- Clamp to stop infusion as required
- Optional Y-site needle-free connector
- PVC-free

Product code	Product description	Units per box
95110	15mm Safety Huber Needle 19G with straight extension	20
95002	20mm Safety Huber Needle 19G with straight extension	20
95001	25mm Safety Huber Needle 19G with straight extension	20
95111	32mm Safety Huber Needle 19G with straight extension	20
95113	15mm Safety Huber Needle 20G with straight extension	20
95004	20mm Safety Huber Needle 20G with straight extension	20
95003	25mm Safety Huber Needle 20G with straight extension	20
95005	32mm Safety Huber Needle 20G with straight extension	20
95114	15mm Safety Huber Needle 22G with straight extension	20
95007	20mm Safety Huber Needle 22G with straight extension	20
95006	25mm Safety Huber Needle 22G with straight extension	20
95115	15mm Safety Huber Needle 19G with extension, Y-site needle-free connector	20
95116	20mm Safety Huber Needle 19G with extension, Y-site needle-free connector	20
95117	25mm Safety Huber Needle 19G with extension, Y-site needle-free connector	20
95118	32 mm Safety Huber Needle 19G with extension, Y-site needle-free connector	20
95120	15mm Safety Huber Needle 20G with extension, Y-site needle-free connector	20
95121	20mm Safety Huber Needle 20G with extension, Y-site needle-free connector	20
95122	25mm Safety Huber Needle 20G with extension, Y-site needle-free connector	20
95123	32 mm Safety Huber Needle 20G with extension, Y-site needle-free connector	20
95124	15mm Safety Huber Needle 22G with extension, Y-site needle-free connector	20
95125	20mm Safety Huber Needle 22G with extension, Y-site needle-free connector	20
95126	25mm Safety Huber Needle 22G with extension, Y-site needle-free connector	20
95127	32 mm Safety Huber Needle 22G with extension, Y-site needle-free connector	20



- New, fully wireless, ECG tip location system
- **AVATAR** ensures the correct positioning of the catheter tip using the ECG technique - ideal for bed-side insertions
- Use with a tablet or smart phone
- ECG cables for tip location (sterile, single use)

Product code	Product description	Units per box
AVATAR tip locator		
203.11.10.01	AVATAR with ECG, ultrasound wireless probe, tablet, interface cables	1
203.11.10.02	AVATAR with ECG, ultrasound wired probe, tablet, interface cables	1
ECG cables for tip location (sterile, single use)		
F7835C	Unipolar ECG extension cable, flexible, plastic coated copper, male 4mm clip	1
F7835DIN	Unipolar ECG extension cable, flexible, plastic coated copper, female 1.5mm touch-proof, DIN 42802	1



A WIDE RANGE OF MEDICAL DEVICES FOR ALL NEEDS